

*hisbalit.com*

# MODEH

*August 2021*

· THE WORLD OUR WAY ·



CASA DECOR · BLACK & WHITE · PALM PARADISO · LOVER'S HOUSE · NOBOHOME





## AN ECO-FRIENDLY PLUNGE!

*After months of inspiration, we're taking the plunge! We invite you to enjoy a plunge into the latest trends with an eco-friendly focus through a refreshing new edition of our magazine MODEH. Designs bursting with colour, innovative chromatic ranges, surprising mosaic tile applications...*

---

*In MODEH 11 you'll discover the details of our latest catalogue for pools and spas, including the Reef collection, inspired in the natural beauty and environmental richness of tropical reefs. We will also give you all the details of Black & White, a designer mosaic tile collection that is causing a stir and becoming the hottest trend in prestigious trade fairs in the sector, including Casa Decor, where Hisbalit again had a presence. We'll give you the highlights of our 3 favourite spaces!*

*For an added touch, in this edition we've taken a virtual trip to Palm Springs, through vibrant projects that recall the glamorous mecca of modernism. Once back home, we'll pay a visit to Mallorca to discover a home that blends into the natural landscape, entirely designed to fully experience and enjoy the island and its climate.*

*The final section of the magazine includes a special surprise. We've interviewed Nobohome, one of the leading design firms creating boutique apartments in Barcelona. We'll discover the essence of their style and the secrets of their successful renovations.*

---



# MODEH Nº11

08/2021

P.04

NEW POOLS AND SPAS CATALOGUE: REEF, AQUALUXE AND NIEBLA

P.12

WHY CHOOSE MOSAIC TILE FOR THE POOL?

P.22

CASA DECOR 2021: VG LIVING / BLANCA HEVIA / GRUPO IMPAR

P.30

COLLECTION BLACK & WHITE

P.38

PROJECT PALM PARADISO

P.46

PROJECT LOVER'S HOUSE

P.54

INTERVIEW NOBOHOME

P.66

WHAT'S NEW?





# NEW POOLS AND SPAS CATALOGUE 2021

---

*MOSAIC TILES INSPIRED IN CORAL REEFS,  
TESSERAE WITH BLURRED EFFECTS  
AND PERSONALISED DESIGNS*

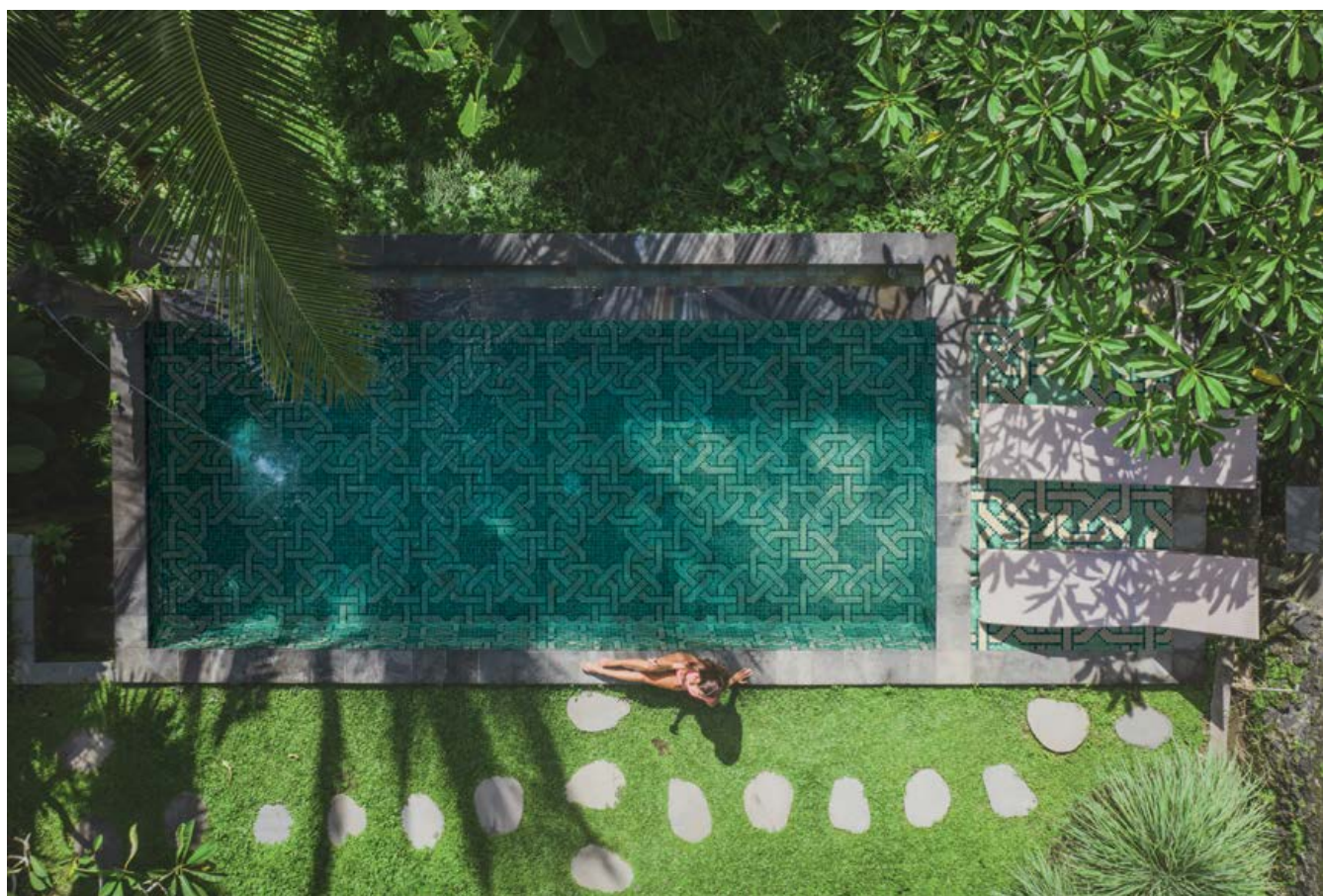




*Hisbalit presents its latest **pools and spas catalogue** “Immerse your senses”, with an ample and careful selection of colours and textures. Mosaic tiles with glossy finishes and iridescent effects that change colour with the sunlight; rustic designs with traditional ceramic touches; models with a modern, avantgarde styling; totally customisable mixes, borders, patterns and designs.*

*This new catalogue of mosaic tiles for pools and spas, also available in digital format, includes over 200 pages of inspiration with new collections and striking design projects where Hisbalit mosaic tiles take centre stage.*

*Hisbalit’s extensive range of colours has been incorporated into the pools collection with new and innovative proposals in green, sand, wite and blue, setting the latest trends in wellness spaces.*



POOL SURFACED IN THE NEW REFERENCE MASCATE A



NEW MODELS: AQUALUXE

One of the novelties of the catalogue is the expansion of Hisbalit's *Aqualuxe* collection with 4 exclusive new designs. This is a very special collection of mosaic tiles with glossy and iridescent effects for spectacular finishes, which are even more striking with the changing effects of the sunlight.



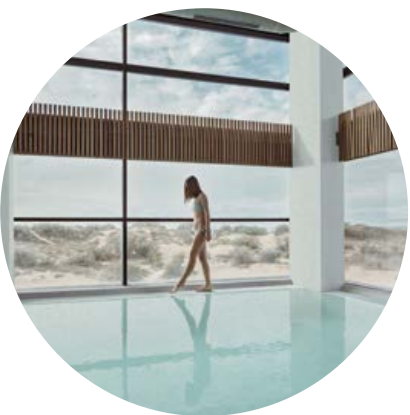
POOL SURFACED IN THE NEW REFERENCE ICARIA



ATMOSPHERE KEROS



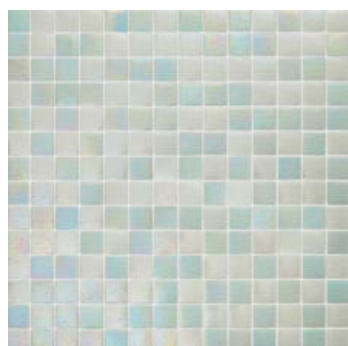
ATMOSPHERE COS



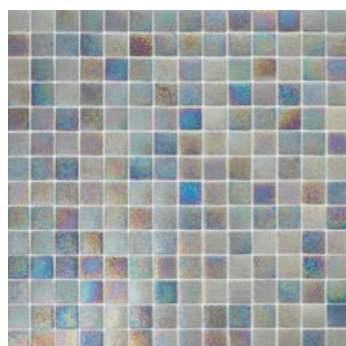
ATMOSPHERE BRAC



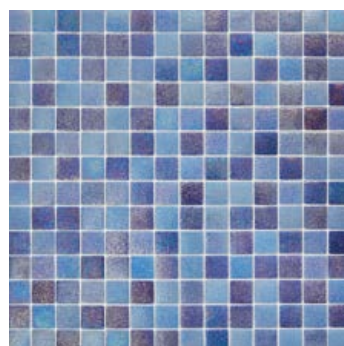
*The collection was previously limited to 12 references and Hisbalit aimed to increase the options to 16 with four new models: BRAC, COS, KEROS e ICARIA.*



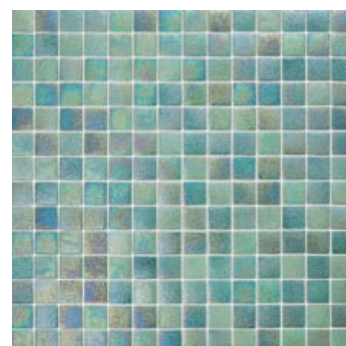
BRAC  
NEW!



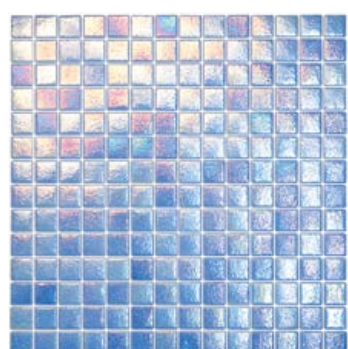
COS  
NEW!



KEROS  
NEW!



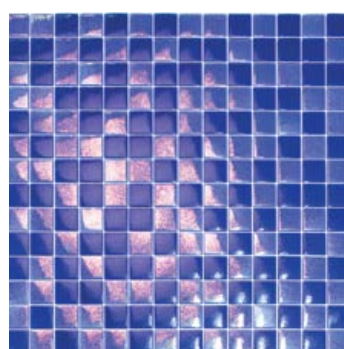
ICARIA  
NEW!



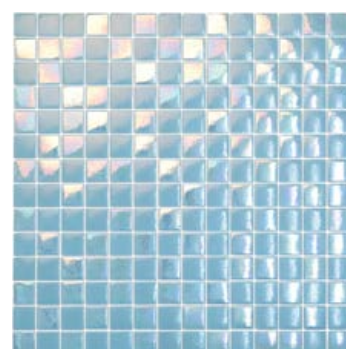
CAPRI



SICILIA



MALTA



CÓRCEGA



IBIZA



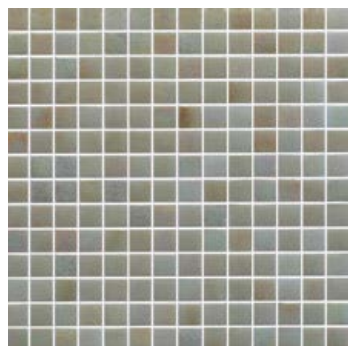
MALLORCA



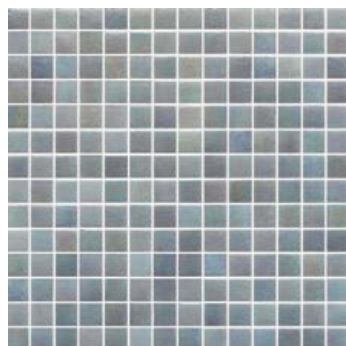
MIKONOS



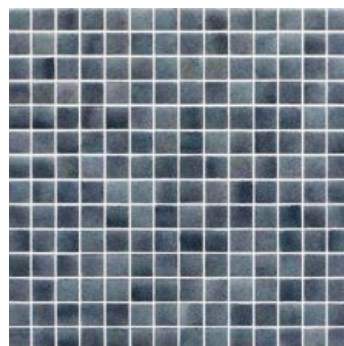
ÍTACA



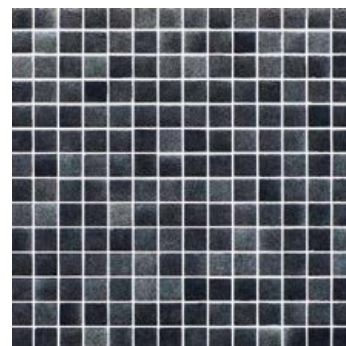
RODAS



ZANTE



ELBA



MILO

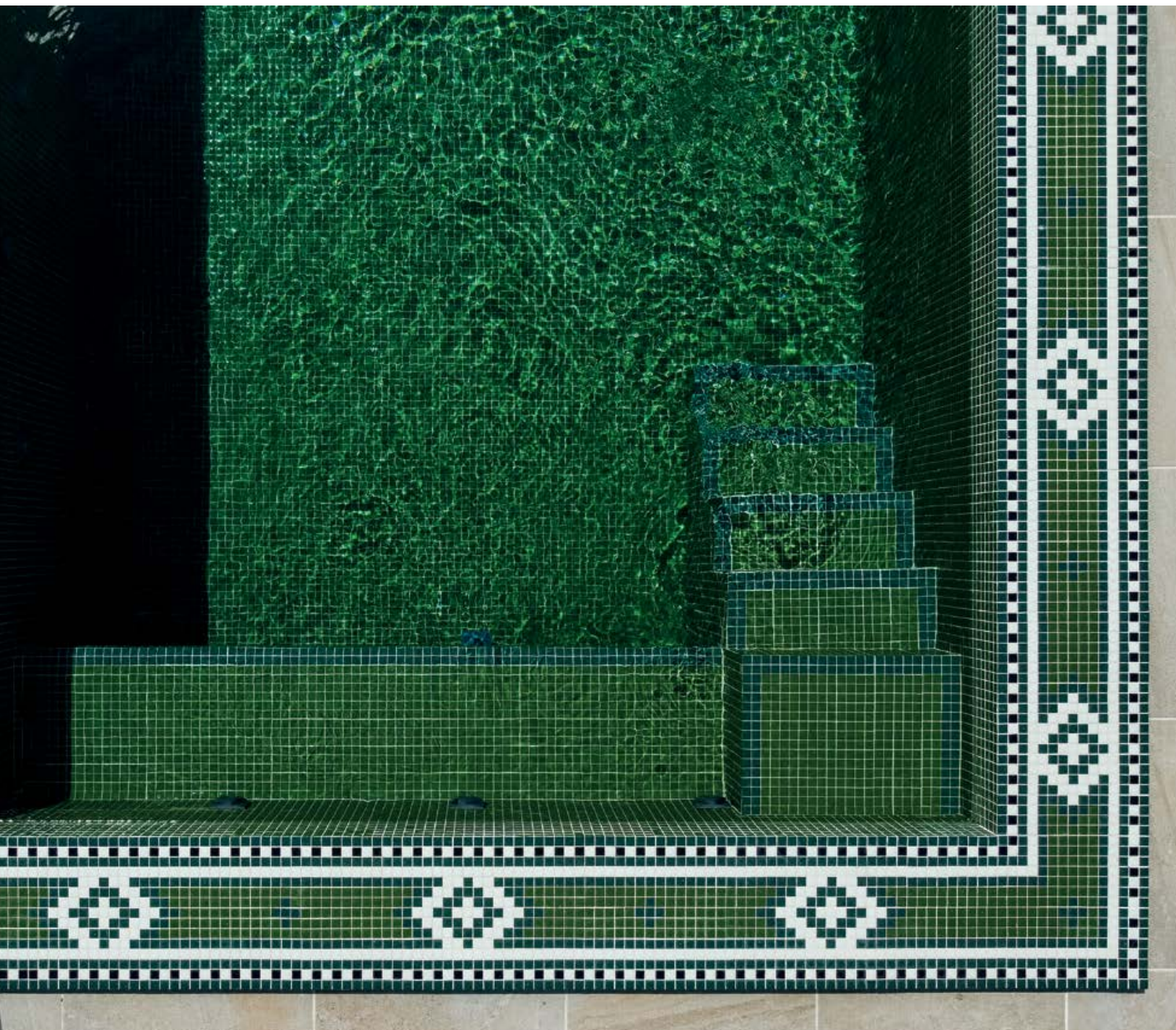
*Another surprise in the Hisbalit pools catalogue is the iconic Niebla collection, with its tesserae with blurred and irregular effects. Hisbalit added two new models (SULU and AZOV) in white and turquoise.*



## DESIGNER POOLS

---

*Hisbalit continues to innovate in pool design with new proposals for mixes and its “Through the 7 Seas” collection with over 40 customisable models.*



CASA MOURISCA SILVES | STUDIO ARTE ALGARVE | PERSONALISED DESIGN FROM ART FACTORY HISBALIT

*Additionally, Hisbalit offers the possibility to create totally customised designs through its **Art Factory personalisation service**. You may select from over 200 colours, four formats and four different finishes that can be combined to create a unique designer pool. These compositions are expertly installed, customised and tailored exclusively for pools.*







## REEF, MOSAICS INSPIRED IN CORAL REEFS

*Hisbalit's 2021 pools and spas catalogue includes the new REEF collection, inspired in the beauty and environmental richness of coral reefs hidden in the depths of the oceans.*



POOL SURFACED IN REFERENCE SAMOA | REEF

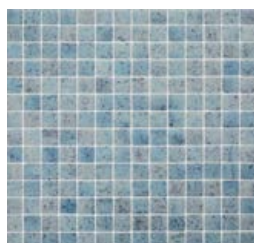
*The company has launched six new references with blurred effects for pool surfaces with the shine and reflections of tropical waters.*



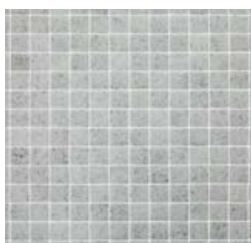
SUMATRA



FIJI



BORNEO



BALI



ROTE



SAMOA

*The new models (Sumatra, Fiji, Borneo, Bali, Rote and Samoa), in blue, white and beige, evoke the crystalline waters of the tropical paradise islands of Southeast Asia and Oceania, home to the great ecological wealth of coral reefs. The 6 models are available in square format (2.3x2.3) with a glossy finish, producing unique colour effects and special reflections depending on the light.*



## ECO INSPIRATION

---

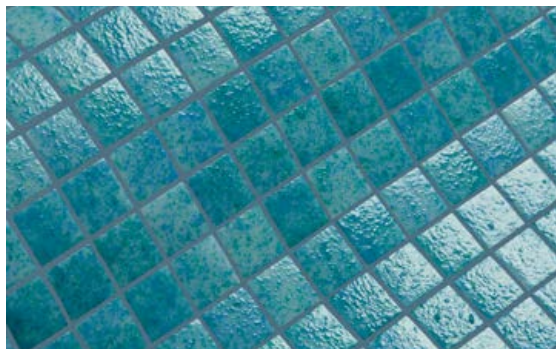
*Apart from their natural beauty, coral reefs play an important role in the ecosystem of the planet, protecting coastlines from tropical storms and hosting an abundance of marine life. This environmental protection served as an inspiration for Hisbalit in its new collection, created with 100% recycled eco-friendly mosaic tiles.*



## COLOURED JOINTS

---

*Hisbalit invites you to play with the colour of the joints when installing its REEF collection, achieving different and unique colour effects.*



REFERENCE FIJI WITH DIFFERENT COLOURED JOINTS: BLUE AND WHITE

[DOWNLOAD CATALOGUE](#)







POOLS DESIGNED BY RAÚL MARTINS WITH MARMARA MOSAIC TILE IN DARK GREEN | NIEBLA HISBALIT. PHOTO: PATRICIA GALLEGOS





## WHY CHOOSE MOSAIC TILE FOR THE POOL?

---

*Thinking of designing a pool and looking for the ideal surfacing material? Need a product that is durable, versatile, with no absorption and with a wide range of possibilities for colours and design? We'll explain why mosaic tiles, also known as gresite, has been and continues to be the optimum material for surfacing pools and wellness areas.*





10

*ADVANTAGES  
OF CHOOSING  
MOSAIC TILE  
FOR YOUR POOL*

---



## 1. A HYGIENIC ANTI-ALLERGENIC MATERIAL

*To guarantee the hygiene of pools and spas it is necessary to use products to eliminate fungi and bacteria. Surfaces that do not absorb humidity, such as Hisbalit mosaic tiles, prevent the build-up of grime. Hisbalit mosaic tiles manufactured with high-quality recycled glass are non-porous, with 0% absorption, and thus prevent the appearance of fungi and bacteria. This is a totally hygienic and anti-allergenic material.*



POOL OF THE IBEROSTAR HOLGUIN HOTEL, SURFACED IN A CUSTOMISED MIX OF MOSAIC TILES | OPEN MIX HISBALIT



## 2. HIGHLY DURABLE AND LONG-LASTING!

*Durability is another characteristic of mosaic tile. It does not scratch and remains unaltered over time, even in high traffic areas.*

*Hisbalit mosaic tiles, manufactured with the highest quality glass, are entirely free of spots, pores or other imperfections. The tiles are resistant to chemical agents and remain totally inalterable over time with a life span of 30 to 40 years.*



POOL OF THE IBEROSTAR HOLGUIN HOTEL, SURFACED IN A CUSTOMISED MIX OF MOSAIC TILES | OPEN MIX HISBALIT

*Hisbalit tesserae are joined together with a revolutionary fixing system called HT-K that uses an exclusive thermo-polymer additive bead to join all the pieces of the tile. The result is an extremely resistant and ductile tile that adapts perfectly to surfaces, guaranteeing excellent results over the long term.*

*This revolutionary system, combined with the right fixing and grouting materials and optimum installation prevents the tesserae from become detached over time.*





CASA ALGARVE | POOL WITH HISBALIT MOSAIC TILES | TIP ARQUITECTOS |  
FERNANDO GUERRA | FG + SG

### 3. RESISTANT TO BRUSQUE TEMPERATURE CHANGES

*Mosaic tile is highly resistant to temperature changes (thermal shock), remaining totally inalterable from sun, rain, extreme heat or cold. It is therefore the ideal material for outdoor pools exposed to the elements, even in locations with harsh climate conditions.*



POOL OF THE RIU CABO VERDE BOAVISTA HOTEL, SURFACED WITH EBRO  
AND CAPRI MOSAIC TILES

### 4. A VERSATILE MATERIAL THAT ADAPTS TO ANY SURFACE

*Glass mosaic tile, thanks to its technical characteristics, is perfectly suited for all types of surfaces both indoors and out. The size of Hisbalit tesserae, only 4 mm, means they can adapt to any surface and form either flat or curved, guaranteeing excellent and durable results.*

*This is an ideal surface for pools with curves or rounded forms, pool loungers, jacuzzi, etc.*





**BORNEO**  
(REEF COLLECTION)

## 5. EASY CLEANING AND MAINTENANCE

*Another advantage in using mosaic tiles for pools is that they require minimal maintenance and cleaning. As a non-porous material, tiles avoid the build-up of grime and bacteria.*

*One common doubt about cleaning mosaic tiles is the grouting. Since the tiles are small with many joints, do they get dirty? The answer is no, providing the appropriate grouting is used for installing the tiles.*

*For installation, Hisbalit recommends using either a cementitious grout, classified as CG2W under the UNE-EN 13888 standard, or epoxy grouting (R-2 and G-2). Both of these materials are waterproof and stain-resistant.*



**EDGE**

## 6. SAFETY GUARANTEED!

*With regards to safety, when designing a pool it is necessary to confirm that all the materials used comply with the Technical Building Code. Wet areas require anti-slip surfaces that have a Class-3 certification.*

*Hisbalit tiles with an anti-slip finish meet all international safety standards. The A3 anti-slip finish has been certified as Class-3 according to the UNE-ENV 12633:2003 standard. Thus, the Hisbalit's A3 finish is one of the most advanced surfacing materials to ensure maximum safety to prevent accidents and falls in pool areas.*

*Additionally, pool designs must also take into account the safety of the finishings. And so Hisbalit has launched EDGE, a new and versatile technical solution for surfacing steps, edges, corners, cove bases and other types of joints, both straight and curved. With an anti-slip finish, this new product offers an enormous range of possibilities for safe and attractive trimmings and finishes.*



**OYAMBRE**  
(WATER MIX)

## 7. MAXIM COMFORT, WITHOUT CUTS OR ABRASIONS!

*Hisbalit tesserae guarantee maximum comfort and safety, designed to walk barefoot. All corners are designed to avoid cuts or abrasions.*



## 8. ECO-FRIENDLY SURFACING

*When designing a pool, the trend is now to use eco-friendly materials that are both durable and environmentally sustainable. For surfaces, there are eco-friendly tiles that are ideally suited for these types of projects. Hisbalit mosaic tiles, for example, are 100% recycled and eco-friendly. Manufactured entirely in Spain using high quality recycled glass and natural pigments.*



ECO TRÓIA RESORT | GSS ARQUITECTOS PROJETO | POOL AVEDÍN SURFACED IN GREEN-COLOURED, MÁRMARA ECO-FRIENDLY MOSAIC TILES FROM HISBALIT

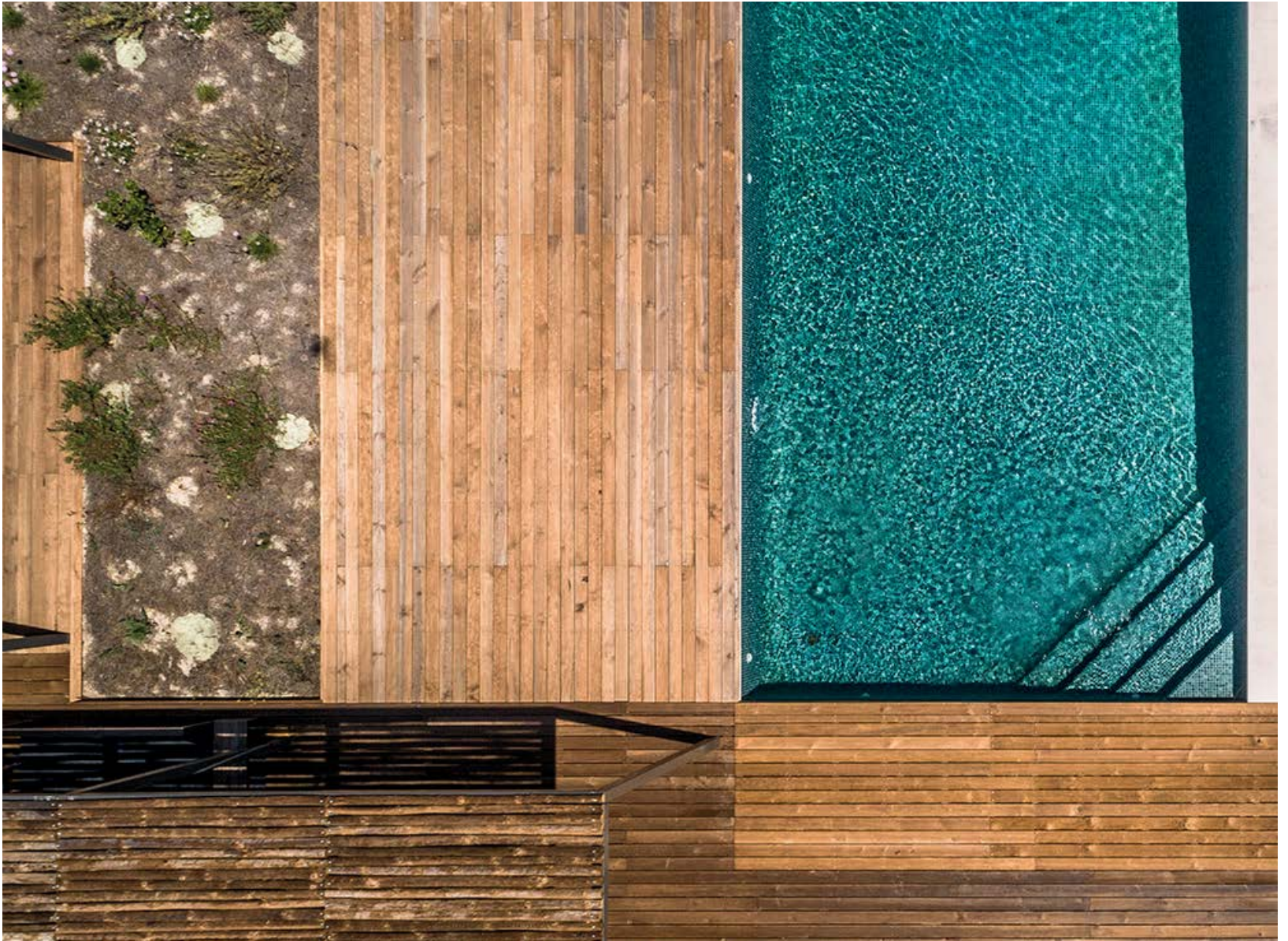
*Hisbalit's production system is also entirely clean and environmentally responsible. Hisbalit has also implemented environmental and quality management systems in all areas of the company, certified according to the international ISO 9001:2015 and 14001:2015 standards, attesting to the company's professionalism and experience in the design and manufacture of eco-friendly mosaic tiles. The result is a 100% eco-friendly product offering plenty of added value.*



## 9. A WIDE RANGE OF COLOURS!

*One of the advantages of using mosaic tile for pools is the endless range of colours and finishes that allow you to let your imagination soar and mark your personal style.*

*Hisbalit mosaic tiles offer a choice of over 200 options of different formats and finishes to give pools striking colour effects.*



ECO TRÓIA RESORT | GSS ARQUITECTOS PROJETO | POOL AVEDÍN SURFACED IN GREEN-COLOURED, MÁRMARA ECO-FRIENDLY MOSAIC TILES FROM HISBALIT

*SCAN THE CODE TO SEE THE COLOUR EFFECT OF DIFFERENT COLOURED MOSAIC TILES!*





## 10. IDEAL FOR 'A LA CARTE' POOL DESIGNS

*A growing trend is the personalisation of pool design. To create unique 'a la carte' pools.  
In this mosaic tiles offer endless versatility.*



DESIGN POOL | GREECE BOTANIC MODEL | THROUGH THE 7 SEAS

*Hisbalit mosaic tiles offer limitless possibilities for colours, textures, formats and finishes.  
Thanks to the customisation service **Art Factory Hisbalit** and also to **Identity Mosaic**, any design or motif imaginable can be  
brought to life in mosaic tile and installed in any pool or spa.*



## HISBALIT AT CASA DECOR 2021

---

*Hisbalit participated in the 56th edition of Casa Decor, with the main themes of “evolution in interior design and sustainability”. Hisbalit identifies entirely with these two principles. Hisbalit is committed to environmental responsibility, the possibilities of interior design and personalisation. With a wide range of colours and a variety of different formats Hisbalit’s eco-friendly mosaic tiles are the material of choice for three renowned design studios in creating their unique environmentally sustainable spaces.*

*At Casa Decor 2021, Hisbalit presented its new Black & White collection inspired in music.*









## “MISS YOUR KISS”

ESPACIO VG LIVING

---

*The interior design studio VG Living pays tribute to the kisses in “Miss your kiss”, the second floor entrance hall of Casa Decor 2021.*

*A colourful living room that evokes and amplifies all the pent up emotions of the time of social distancing, allowing us to foresee them in the near future, more natural and powerful than ever before.*



*The space, modern and evocative, is an inspiring lounge with a positive vibe. “An ode to the kiss, an essential part of our culture and form of expression that has been neglected during the pandemic”, explained Virginia Gasch.*

*In Miss Your Kiss we have a vision of the **living room of the future**, where there are no distances, where emotion rather than distance is the new normal. Hugs and kisses are the stars, essential for our emotional health and wellbeing. These are represented in the form of a sofa (kisses) and an armchair (hugs), made with sustainable fabrics.*

---





*The space also includes a striking designer piece, in arches and circles, created in lacquered glass with detailing in gilded brass, framing the sofa with a kiss and is a symbol of complexity. The mirror, a hallmark of Virginia's work, gives depth and elegance to the space. The lamp, inspired by Calder's sculptures, was also designed by the studio and is of iron and methacrylate in the figure of a kiss.*

#### HISBALIT MOSAIC TILE USED IN THE DESIGNER FLOOR:

BROWN: UNICOLOR 210  
 BEIGE: UNICOLOR 333  
 PINK: UNICOLOR 166  
 WHITE: UNICOLOR 103

## ARTISANAL AND ECO-FRIENDLY MATERIALS

*The arch, the hottest trend for 2021, is the hallmark of the space, enveloping the visitor in its rounded forms also on the floors, walls and furnishings.*

*Virginia Gasch decided on materials associated with nature, craftsmanship and personalisation. An example of this is the **designer floor** created using the customisation service from Art Factory Hisbalit. The design incorporates 4 references of mosaic tile in square format (2.3x2.3cm) in pink, brown, beige and white; a chromatic range inspired in kisses.*





## “CECI N’EST PAS UNE SALLE DE MUSIQUE” BETWEEN MAGICAL REALISM AND HAUTE COUTURE

GRUPO IMPAR | EQUIPO IMPAR ARQUITECTURA & MANAGEMENT

*Grupo Impar presented at Casa Decor 2021 a sophisticated music room inspired by the renowned couturier Cristóbal Balenciaga and the surrealist painter René Magritte, creative geniuses of the 20th century and contemporaries at Canalejas 3. Among the most striking features is the haute-couture, eco-friendly surfaces, in the DOTS model by Art Factory Hisbalit and OSTINATO and SOPRANO models from the new Black & White collection.*



*The studio created an authentic tailored suit for a space devoted to music, combining the chromatic palette of Balenciaga (black and white), the volume and magical realism of Magritte, reflected in the furnishings and décor, inviting us into a space as if it were a portrait.*







*For the floors of the hallway and patio, the designers selected two designs from the new and music inspired Black & White collection by Hisbalit, presented at Casa Decor 2021.*

*The designers chose the harmonious and balanced SOPRANO and OSTINATO models, combining the tesserae in a melodic and rhythmic design.*



SEE THE VIDEO OF THE SPACE!

## HAUTE COUTURE AND ECO-FRIENDLY SURFACES

*Among the most striking features of the space are the haute couture and eco-friendly surfaces. Grupo Impar chose the DOTS model from the Art Factory Hisbalit collection for the floor of the music room.*

*A design with hexagonal tesserae with black and white dots, characteristic of the prestigious fashion designer Balenciaga.*





## “MEDINA”

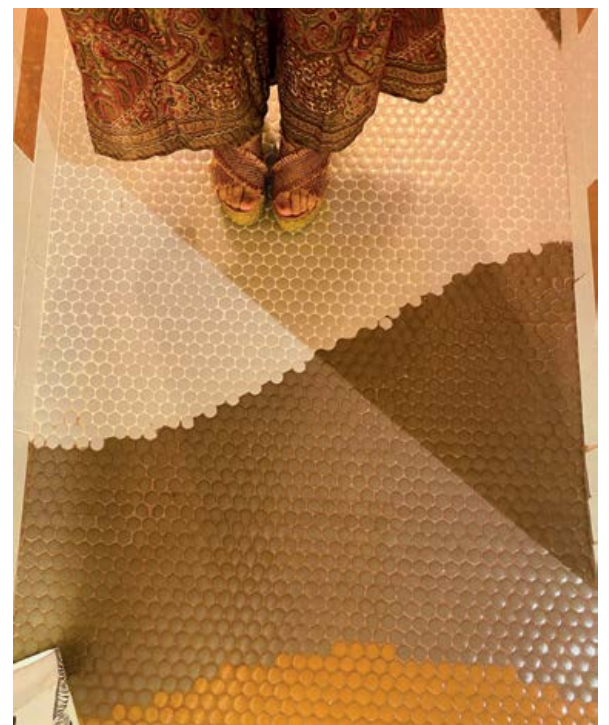
SPACE DRIMDECO BY CUADRIMAN | BLANCA HEVIA

*Hisbalit mosaic tile was also part of “MEDINA” the space of Drimdeco by Cuadriman, designed by Blanca Hevia. A gallery in which the interior designer uses the power of the image to transport us to another realm, evoking the fascinating streets of Morocco, with the influence of the varieties of the Mediterranean style from a unique personal vision and interpretation.*



*The space evokes the life, aromas and sounds of Mediterranean Morocco thanks to the power of the image. Blanca wished to reflect the dreamscape between the image and the real world, the power to transport us to a different place or dreamworld simply by looking at a picture or work of art.*

*To achieve this the designer used a gentle chromatic range and eco-friendly materials, including Hisbalit mosaic tiles, creating a personalised design inspired in the Medinas of Morocco for the floor and a mural on one wall of the space.*





## “FEET ON THE GROUND LOOKING OUT TO SEA”

*The composition entitled «Feet on the ground, looking out to sea» begins with earth tones and changing to pink and orange colours, gradually grading towards the blue green colours of the sea.*

*An inspiring design created with 11 references of mosaic tile in soft tones (brown, beige, grey, pink and green) in round format.*



### HISBALIT MOSAIC TILE USED IN THE DESIGNER FLOOR:

BROWN: UNICOLOR 212, 210, 322 Y 323

BEIGE: UNICOLOR 331 Y 329

GREY: UNICOLOR 334, 306 Y 108

PINK: UNICOLOR 255

GREEN: UNICOLOR 313









*LAUNCH*

# **BLACK & WHITE**

---

*New collection from  
Art Factory  
Inspired in music*



*Music, «the art of the muses», is the art of constructing a combination of sounds and silences, organised with sensitivity and logic respecting the fundamental principles of melody, harmony and rhythm.*

*Inspired by music and the magic produced simply by the right combination of sound and silence, we offer Black&White, the latest collection from Hisbalit.*

---



REFERENCE MINUETTO

*The collection includes over twenty geometric designs, created with eco-friendly mosaic tiles in black and white: a timeless tandem of light and darkness, serenity and perfection, lustre and sophistication.*

---





RITMO MODEL



# BLACK AND WHITE: SOUND AND SILENCE

---

*Two colours as an interpretation of sound and silence: **Black and White**. The purity and light of white in counterpoint to the elegance and sophistication of black.*

*A magnetic contrast that produces, as with a piece of music, 22 harmonious and balanced designs.*



REFERENCE SONATA

*A timeless tandem, giving unmistakable personality to a space, achieving the perfect balance between the modern and the classic.*

---





PIZZICATO MODEL



# SYMMETRY OF WALLS AND FLOORS

---

*Piano, Allegro, Arpeggio, Blues, Ostinato or Sonata are just some of the names of the 22 references of the new collection from Hisbalit with an interplay of movement and orientation, contrasts and symmetries.*

*Geometric motifs that, like all the collections from Hisbalit, can be used on any type of surface, both indoors and outdoors.*

*The models are designed with tesserae in different formats: square (2.3×2.3), round and hexagonal; and with a satin finish.*

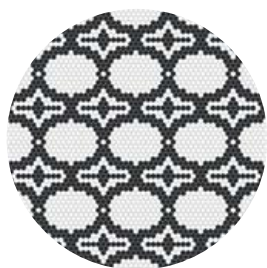


REFERENCE PAVANA

SCAN THE CODE TO SEE THE FIRST PROJECTS WITH THE NEW COLLECTION!



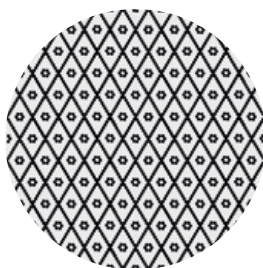




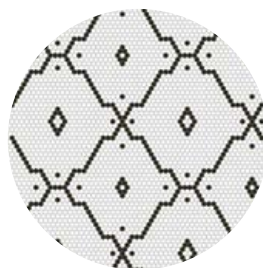
ADAGIO



BALLET



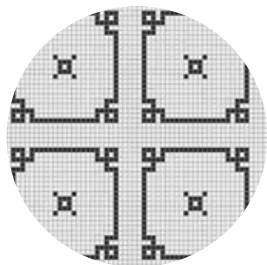
MINUETTO



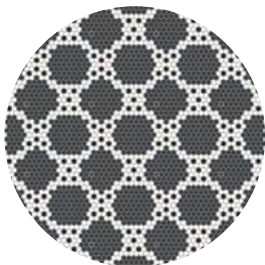
ARPEGGIO



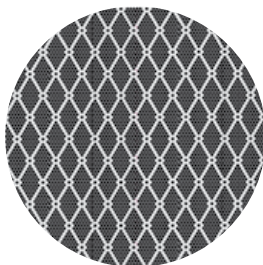
OPERA



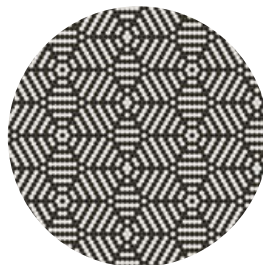
BEMOL



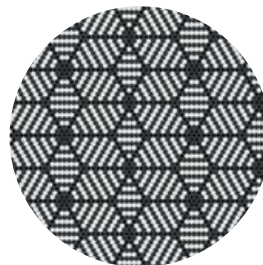
OSTINATO



PAVANA



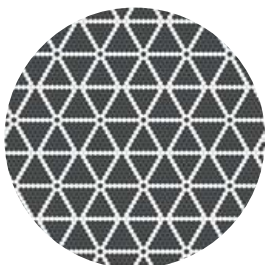
BOSSA



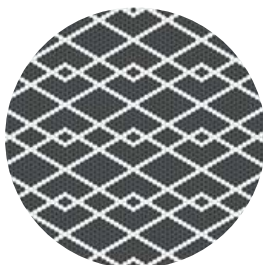
SINFONIA



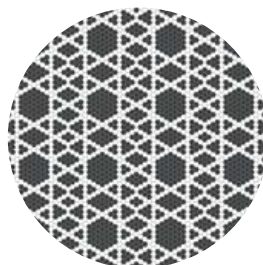
JAZZ



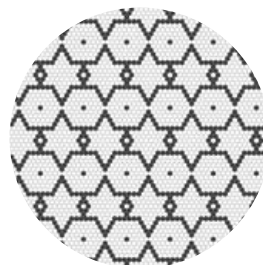
SONATA



PIZZICATO



SOPRANO



TANGO



PIANO



ALLEGRO



FLAMENCO



RITMO



MELODIA



BLUES



FADO

[VIEW AND DOWNLOAD THE CATALOGUE](#)

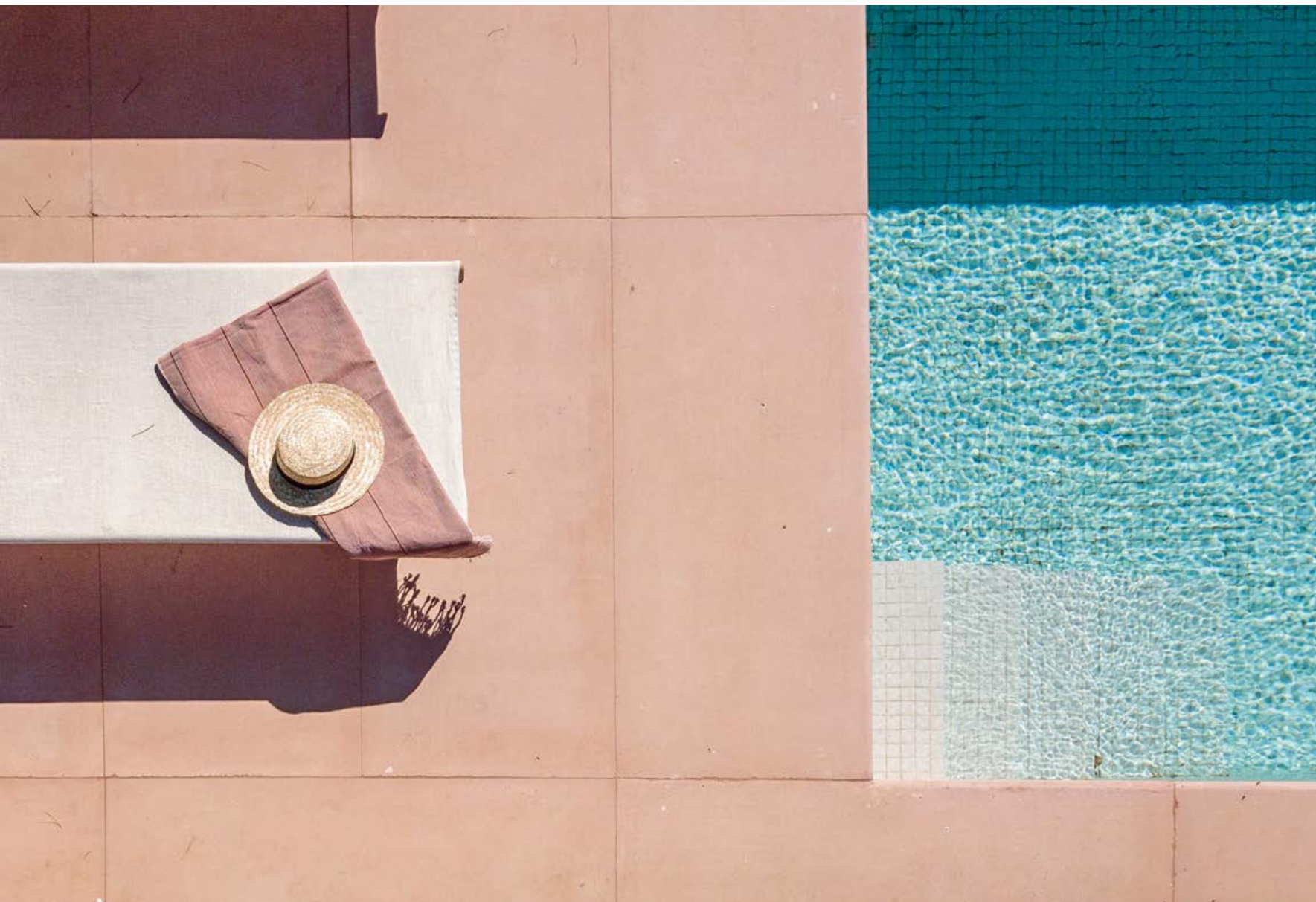




A woman with short brown hair, wearing a black dress, is sitting on a white windowsill. She is looking out of a large window at a vast landscape with trees in autumn colors (orange, yellow, and red) under a pale sky. The interior has a wooden ceiling with exposed beams and a wooden floor. A grey sofa is partially visible on the right.

## LOVER'S HOUSE





*Isla Architects transforms a bare frame into a charming Mallorcan hideaway.  
A home that blends into the natural landscape, entirely designed to fully experience and enjoy the island and its climate.*

---





*Renovate a house that doesn't yet exist? Although it may seem strange, this is exactly what Isla Architects did with Lover's House. They were commissioned for a total renovation of a house that had yet to be built, with only the bare frame. The owners wanted to transform it into a home with a striking design and conceived to fully enjoy the island and its climate.*

*Isla Architects substantially changed the layout of the structure, making the outdoor area the heart of the home: a pool with panoramic views of the Tramuntana and a rustic environment surrounded by grapevines and shielded by a pine forest.*

---



---

*The architecture studio decided the colour of the façade would set the tone. They chose a warm reddish colour that blends into the natural landscape, simulating the reddish soil of the area.*

*In the interior, the colour palette is limited to concrete tinted in the same colour, with white, copper and natural wood features to give the home a warm and natural feel. This limited palette of colours and materials, all Made in Spain, reveals the simple geometry of the building and creates a visual and tactile continuity between the architecture and the surroundings. Both monochrome and vibrant, the house changes throughout the day according to the sun and the landscape, with moving patterns of shade and subtle changes to the surfaces.*







*The interior of Lovers's House has a striking entrance extending towards both sides of the patio and giving access to the rooms. The guest bedroom is the initial volume of the home and its own independent patio. The rest of the rooms are in the south wing: two twin bedrooms open to the garden and with a shared bathroom and the main bedroom, with a large patio finished in colour-tinted concrete.*

*The kitchen is on the north side with its own patio opening onto the mountains of Alaró. The kitchen is independent but also connected to the living room set in the largest crux of the home opening onto panoramic views of the mountains and garden. The asymmetrical line of the roof opens the structure more to the South than the North, shielding the large windows from the sun while also allowing a cooling cross breeze.*





## VISUAL CONTINUITY

---

*The pool is separated from the house to give the pool its own space, creating an additional volume to the home emerging from the landscape. Perfect for swimming lengths between the Tramuntana and Puig de Ses.*

*Quality was the basis in the choice of materials. The designers chose **Hisbalit eco-friendly mosaic tiles in white**, specifically the **Pas** reference from the Unicolor Pools collection. Smooth tesserae that produce a sky blue look to the pool. Taking a swim in the pool of the Lover's House is like immersing yourself in an authentic oasis, where one can disconnect from daily cares and reconnect with nature.*







POOL SURFACED IN WHITE PAS MOSAIC TILE | UNICOLOR HISBALIT



DESIGNERS: ISLA ARCHITECTS / JUAN PALENCIA, MARTA COLÓN DE CARVAJAL  
TEAM: NELSON FIDALGO MAGRO, KATERINA KULANOVA  
BUILDER: OBREMA 2000  
SURVEYOR: JORDI HOMAR  
PHOTOGRAPHY: LUIS DÍAZ DÍAZ / MATÍAS ALEXANDRO | FANTASTIC FRANK INMOBILIARIA |  
STYLIST: OMA PROJECT





*“TOP QUALITY MATERIALS,  
A GOOD LAYOUT,  
AND A TOUCH OF SURPRISE:  
THE 3 BASIC INGREDIENTS  
FOR SUCCESSFUL RENOVATION”*

---

HEXAGONOS MODEL WITH PERSONALISED COLOURS





# BIANCA BOSMAN

---

## NOBOHOME

*Nobohome has become one of the leading designers of boutique apartments in Barcelona. Luxury apartments in top locations with Scandinavian functionality and exquisite design.*

*They began in the home renovation sector, almost by chance, through their own experience of renovating their own home. Now, almost 10 years later, they are specialists in the sector. The hallmark of their projects? The use of honest, sustainable, top-quality materials that give a feel of luxury and comfort.*

---







*IN LESS THAN A DECADE YOU'VE BECOME A REFERENCE IN THE DESIGN AND RENOVATION OF LUXURY HOMES AND APARTMENTS IN BARCELONA. WHAT INSPIRED YOUR PASSION FOR INTERIOR DESIGN AND WHERE DID THE IDEA OF CREATING NOBOHOME COME FROM?*

---

*The idea of creating Nobohome came out of the love Niels and I had for Barcelona. We used to visit the city ten times a year from Amsterdam and we began to dream about a future in the city with a great idea that allowed us to change our destiny.*

*After a long search, we bought and renovated an apartment for ourselves, our family and friends. The renovation was a great success. The apartment appeared in various magazines and media specialised in interior design and décor. Our work was popular and we decided to turn our passion into a business.*

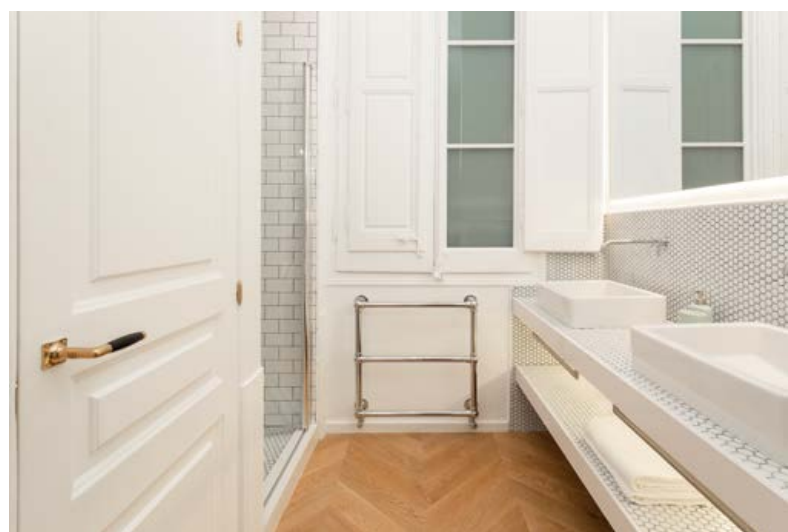




## HOW WOULD YOU DEFINE YOUR WORK PHILOSOPHY?

---

*“Never regret not having lived your own life. Health and happiness are the most important things”. This is a philosophy we try to bring to our projects.*



## YOUR PROJECTS EXUDE STYLE, ELEGANCE AND MODERNITY. A FUSION OF SCANDINAVIAN FUNCTIONALITY AND EXQUISITE DESIGN. HOW WOULD YOU, IN YOUR OWN WORDS, DESCRIBE THE NOBOHOME STYLE?

---

*Each apartment has its own personality and character. We always try to bring out the maximum potential of every space with the best finish possible. Form and function are equally important.*





HEXAGONOS MODEL WITH PERSONALISED COLOURS

## WHAT IS YOUR MAIN SOURCE OF INSPIRATION WHEN APPROACHING A NEW RENOVATION PROJECT?

*We take our inspiration from the world around us. It may be a form, an animal, nature, a feeling, an experience... But our main source of inspiration is what you feel when entering a space for the first time. Its light, its soul, its layout, its history.*

## IS THE INTERNATIONAL VISION OF NOBOHOME PROJECTED ONTO EACH RENOVATION?

*More than an international vision, what we try to convey is the same standard of luxury, imagining what future buyers will need in their home: good, honest materials of the highest quality that give a feel of comfort and luxury.*



REFERENCE: HEXAGONOS



*IF YOU HAD TO CHOOSE 3 GOLDEN RULES  
TO ADD STYLE AND FUNCTIONALITY TO A SPACE  
WHAT WOULD THEY BE?*

---

*If I had to choose 3 rules they would be: good layout of the home; with lots of light and space; top quality materials, properly installed, and being bold in using different combinations that are out of the ordinary. That is, to add a surprising touch to each apartment.*



WALL SURFACED IN WHITE MOSAIC TILE (UNICOLOR 103) AND GREY GROUTING

*OF ALL YOUR PROJECTS,  
WHICH ONE ARE YOU MOST PROUD OF?  
WHAT CHALLENGE WOULD YOU LIKE TO TAKE ON IN THE FUTURE?*

---

*It's difficult to choose, but I think the project in Calella de Palafrugell that we finished this year is very special. A challenge for the future is to continue having fun with the work, despite all the bureaucracy we have to deal with.*



*DO YOU GIVE A LOT OF IMPORTANCE TO THE USE OF SUSTAINABLE MATERIALS IN EACH RENOVATION PROJECT?*

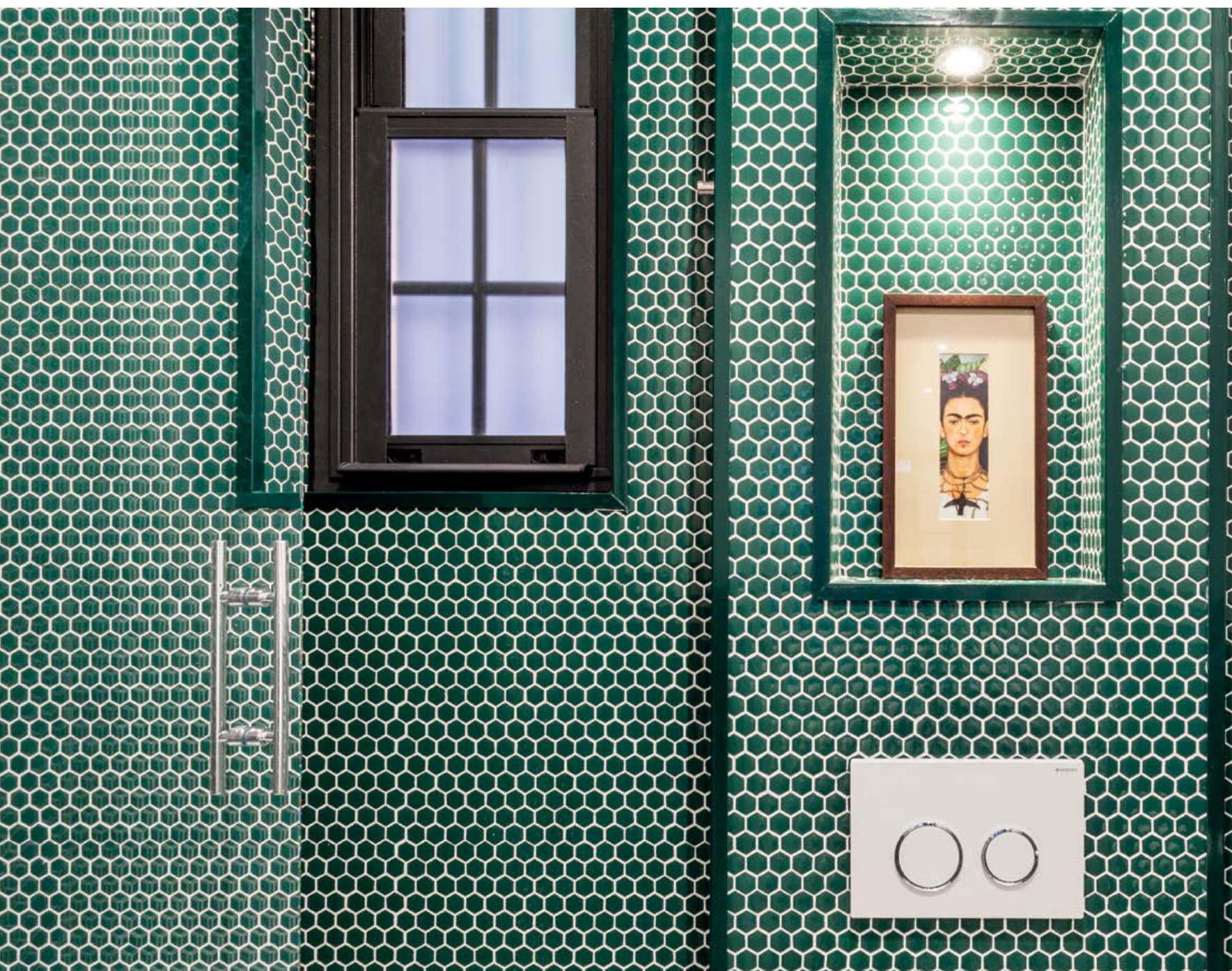
---

*Of course. We carefully select the materials for each project with an eye to sustainability. We always verify the origin of the products and what they are made of. We also incorporate second hand furnishings into all our projects, to add a vintage touch.*

*HISBALIT MOSAIC TILES ARE AN ESSENTIAL PART OF YOUR PROJECTS. WHY MOSAIC TILE?*

---

*I love traditional mosaic tiles and Hisbalit offers lots of possibilities. You can choose one colour out of a huge range of colours, or you can use a multicolour combination. You can also take an image and reproduce it in mosaic tile or add a touch of fun using designs from Art Factory.*



UNICOLOR 220 MOSAIC TILE IN HEXAGONAL FORMAT



*TERRACES, BATHROOMS, HALLWAYS, SHOWERS... YOU HAVE USED HISBALIT MOSAIC TILE FOR ALL KINDS OF APPLICATIONS WHICH HAS BEEN THE MOST SPECIAL?*

---

*That's a difficult question to answer. We've used Hisbalit mosaic tiles in practically all our projects, even in our first apartment where we installed cove bases in the corners. And so, it's an indispensably versatile material to add a different touch to each of our projects. We pay a lot of attention to the installation to ensure a spectacular final result.*



HEXAGONOS MODEL WITH PERSONALISED COLOURS

*AS A FORECAST OF THE COMING TRENDS, WHAT DO YOU SEE AS THE COMING DECORATIVE STYLE FOR 2022?*

---

*In 2022 we'll see comfort and luxury in the home. With rounded surfaces and formats, soft colours and, as a contrast, purple tones.*



ONE OF THE LEADING DESIGNS IS THE HEXAGONOS MODEL, IN PERSONALISED COLOURS TO ADAPT TO THE CHROMATIC RANGE OF EACH HOME. IS THIS THE MOST STRIKING DESIGN?

---

*We used the Hexagonos design from Art Factory Hisbalit in two projects with personalised colours. For an apartment we were inspired by the floor of the restaurant of the Wythe Boutique Hotel in Williamsburg, New York. We included the model in three areas of the home: the kitchen floor, the hallway and the terrace.*

*In other projects were personalised the design with blue tones, for the floor of the main bathroom, with very striking and distinguished results.*



CREATIVITY IS ONE OF THE HALLMARKS OF NOBOHOME. HAS THE POSSIBILITY OF CREATING 'A LA CARTE' DESIGNS WITH THE ART FACTORY PERSONALISATION SERVICE HELPED YOU GIVE FREE REIGN TO YOUR CREATIVITY?

---

*Yes. Without a doubt. When I take my time thinking about designs, I come up with surprising designs that I can recreate with this very special material. It takes time to bring these to life because the installation is all by hand.*





### THE MOST SPECIAL HISBALIT COLLECTION?

*I love the new Black & White collection, with elegant combinations in black and white, ready to install.*





TERRACE WITH FLOOR IN HEXAGONOS | ART FACTORY







### COLOUR MENU FOR JOINTS!

*New from Hisbalit is the launch of our “colour menu for joints”. Including templates with grouting in different colours, making it easier to test how the aspect of the installation will change depending on the chosen colour of the grouting. Ask about it at your official Hisbalit distributor!*



### HISBALIT AT CERSAIE 2021!

*We're back at Cersaie after a year's hiatus! Last year's event was cancelled due to the Covid-19 health crisis. This year the most prestigious international trade fair in ceramics and bathroom fixtures will be held in Bologna, from September 27th to October 1st and Hisbalit will be there with the latest trends in top-quality eco-friendly mosaic tiles.*

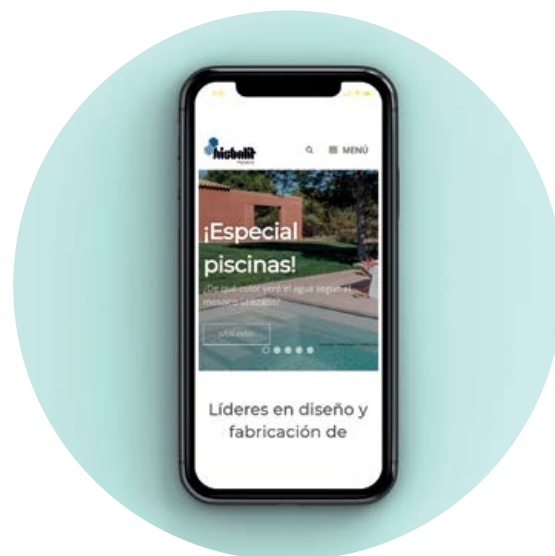


### WE'VE RENEWED OUR COMPANY WEBSITE!

*Have you seen the new website [www.hisbalit.es](http://www.hisbalit.es)? The renewed website, with a more attractive and functional design, is compatible with mobile devices with quicker loading time for a better user experience.*

*What's more, we have included new projects, more visual content, a selection of atmospheres for each reference and a new technical section.*

***Scan the code and discover all the latest news and products!***



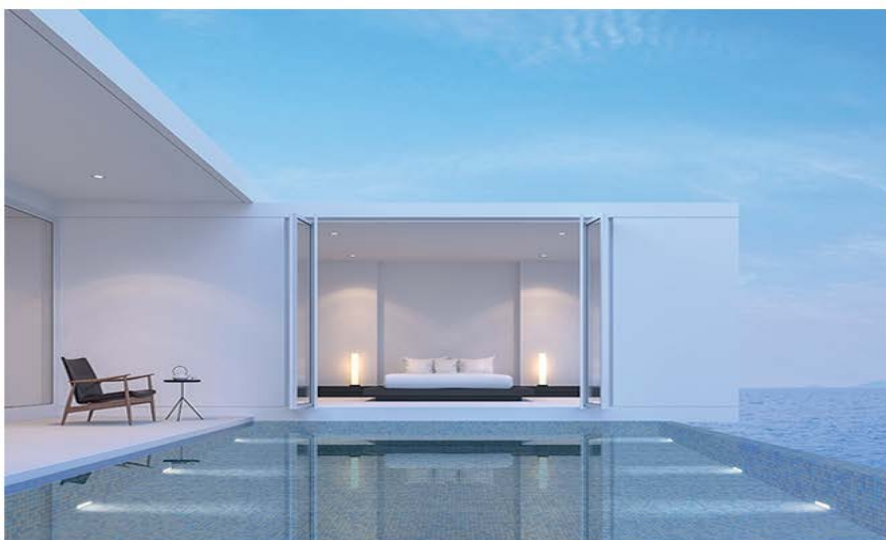


### WE'VE GOT NEW PROFILES IN ARCHDAILY, ARCHIPRODUCTS AND TILELOOK!

*At Hisbalit we've upped our presence in professional platforms and websites for architecture and design!  
We've got new profiles on ArchDaily, Archiproducts and TileLook!*

ArchDaily > Products > Tiles / Mosaic / Gresite > Mosaic Tiles - Reef

#### Mosaic Tiles - Reef | Hisbalit



Use	: Wall and floor tiles
Applications	: Swimming pools, exterior, interior
Characteristics	: Rectangular shape, anti-slip, meshed piece, recycled glass
Format	: Tile
Sizes	: 2.5cm x 2.5cm



#### MESSAGE THE MANUFACTURER

Name

Email

Country/Region

Spain

City

Branch

Architecture Interior Design End User

Contractor / House Builder Other

Type of request

Price/Quote Catalog Information

Message

Let Hisbalit know about your specific requirements such as quantity, size, color or delivery times.

Hello Hisbalit,  
I'm interested to know more info about Price/Quote.



*On ArchDaily we have included our extensive catalogue of products with amazing projects.*



*On Archiproducts you'll find our products in BIM format.*



*On TileLook you can include our mosaic tiles in your 3D projects.*







# MODEH

*[www.hisbalit.com](http://www.hisbalit.com) / [cac@hisbalit.es](mailto:cac@hisbalit.es)*