

hisbalit.es

MODEH

August 2023

• THE WORLD OUR WAY •



POOLS SPECIAL • LETTERING • CASA DECOR 2023 • PANICLUB • JOSÉ LARA

INTRODUCTION

Days of bathing, ‘chiringuitos’ and long lazy reading, but humming with inspiration. We’re waited until the relaxed, sunny days of summer to release MODEH 14 to give you all our latest news.



We invite you to take the plunge, with a look at the latest trends in pool design. Discover the hottest colours of the season and the most innovative new projects, including materials that change colour in the dark Don’t miss our Star Water collection!

We’re off to the Canary Islands to present Paniclub. A classic ‘chiringuito’ beach bar with an inspiring retro feel filled with verve, colour and that holiday vibe. An inspired project by BN Arquitectos.

We’re also taking a look back at Casa Decor 2023, where we received the 2nd Special Jury Prize for “Best design of an integrated product”. A memorable edition where we presented our Lettering and Petite collections with Andreína Raventós and Egue y Seta.

And what’s more, we’ll also fill you in on the latest news from the sector in an interview with renowned interior designer José Lara. The designer reveals the upcoming trends in colours and talks about his start in the world of décor and design, his most important projects and the keys his studio’s success through order and painstaking attention to every detail.

MODEH Nº14

08/2023

P.04

POOLS SPECIAL!

P.14

LETTERING

P.16

CASA DECOR 2023

P.24

PANICLUB

P.30

INTERVIEW JOSÉ LARA

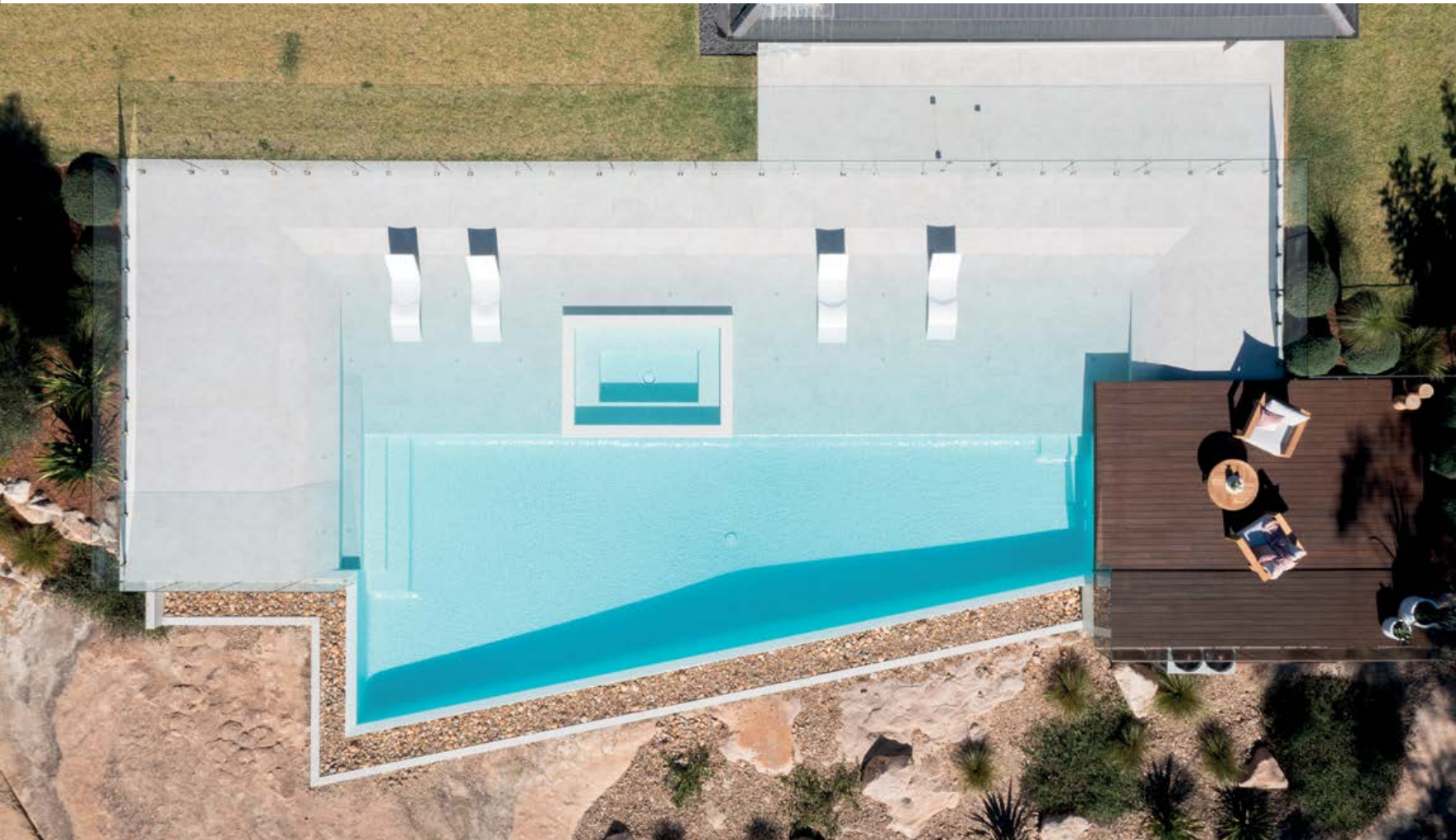
P.38

WHAT’S NEW?

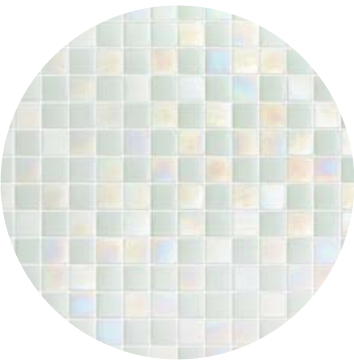


IT'S POOL TIME!

*With irregular forms adapted to their environment in dark tones or colours evoking natural world...
We invite you to lie back, relax, and discover the latest trends in pool design,
the crown jewel of outdoor décor and design.*



POOL SURFACED WITH IBIZA MOSAIC TILE (AQUALUXE HISBALIT). ARTISAN EXTERIOR



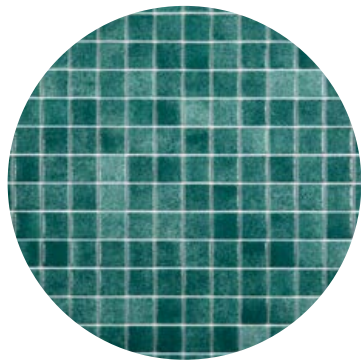
COLOURS EVOKING THE NATURAL ENVIRONMENT

Eco-friendly surfaces manufactured with sustainable materials are the latest trend. Now with colours that connect to the natural world. Greens and sandy tones are the favourites of the season.

Choose beige for the basin of the swimming pool creating an attractive sand-coloured effect! A colour that will transport you to the beach and produce a striking tropical effect.

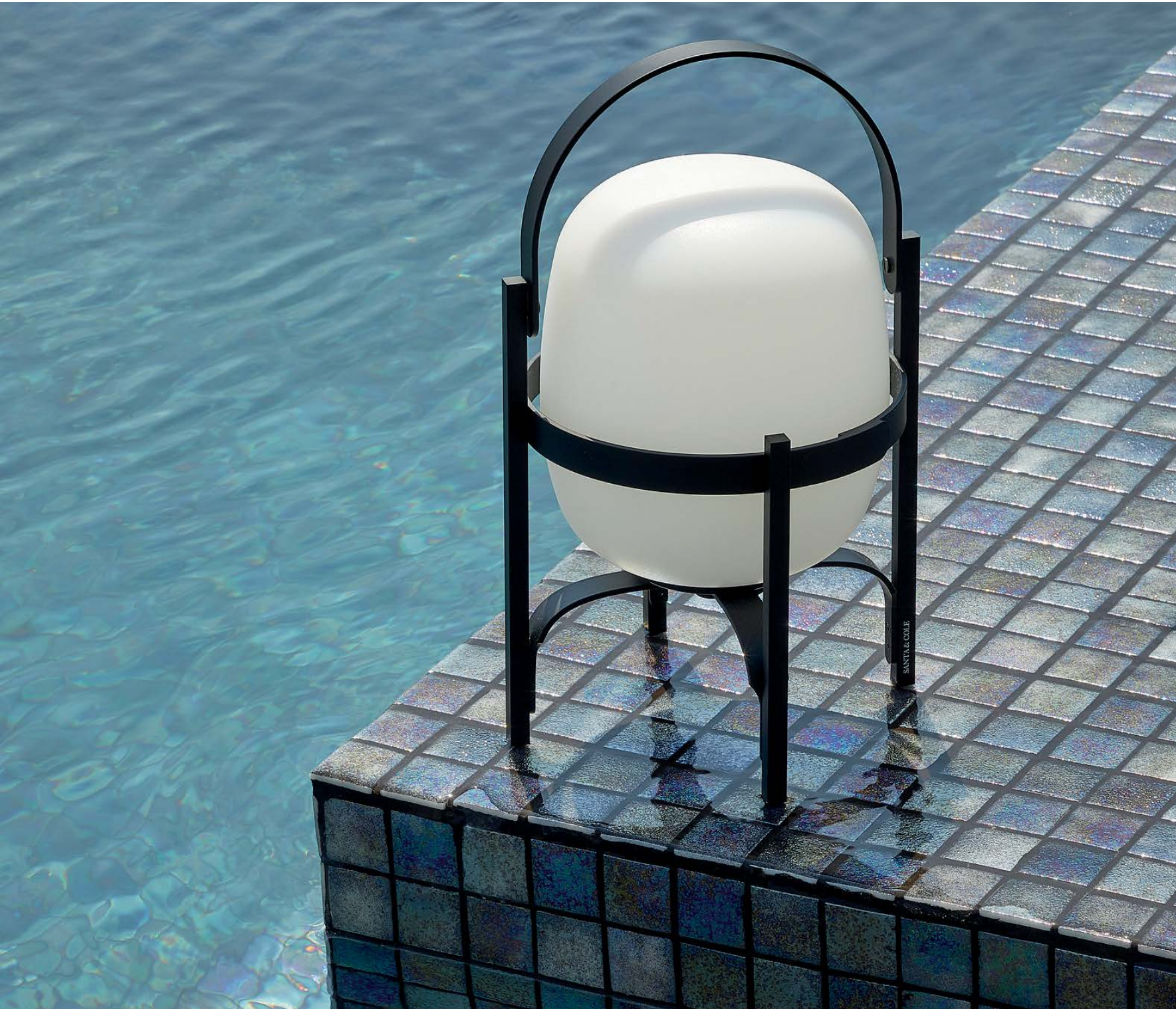


EMERALD GREEN POOL WATER | MÁRMARA HISBALIT | PROJECT BY GSS ARQUITECTOS | PHOTO: JOÃO GUIMARÃES

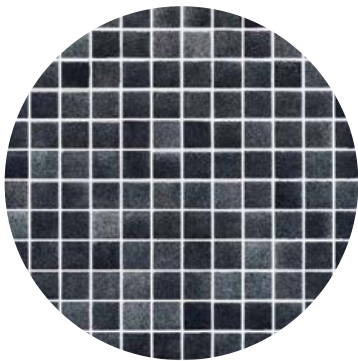


DARK TONES

Dark, intense colours are the latest in avant garde pool design, giving sobriety and elegance while highlighting the natural effect of the water.



POOL SURFACED IN BLACK MOSAIC TILE (REFERENCE: MILO AQUALUXE HISBALIT). PROJECT BY VÁZQUEZ Y BENAGES



IRREGULAR FORMS

Rectangular pools have given way to curved, sinuous designs with irregular forms adapted to the outdoor landscape. These pools require a more versatile surfacing, such as Hisbalit mosaic tile that perfectly adapt to any surface, straight or curved, guaranteeing excellent and durable results.



POOL SURFACED WITH A PERSONALISED MIX OF GREEN MOSAIC TILES. ARTISAN EXTERIOR.

INFINITY!

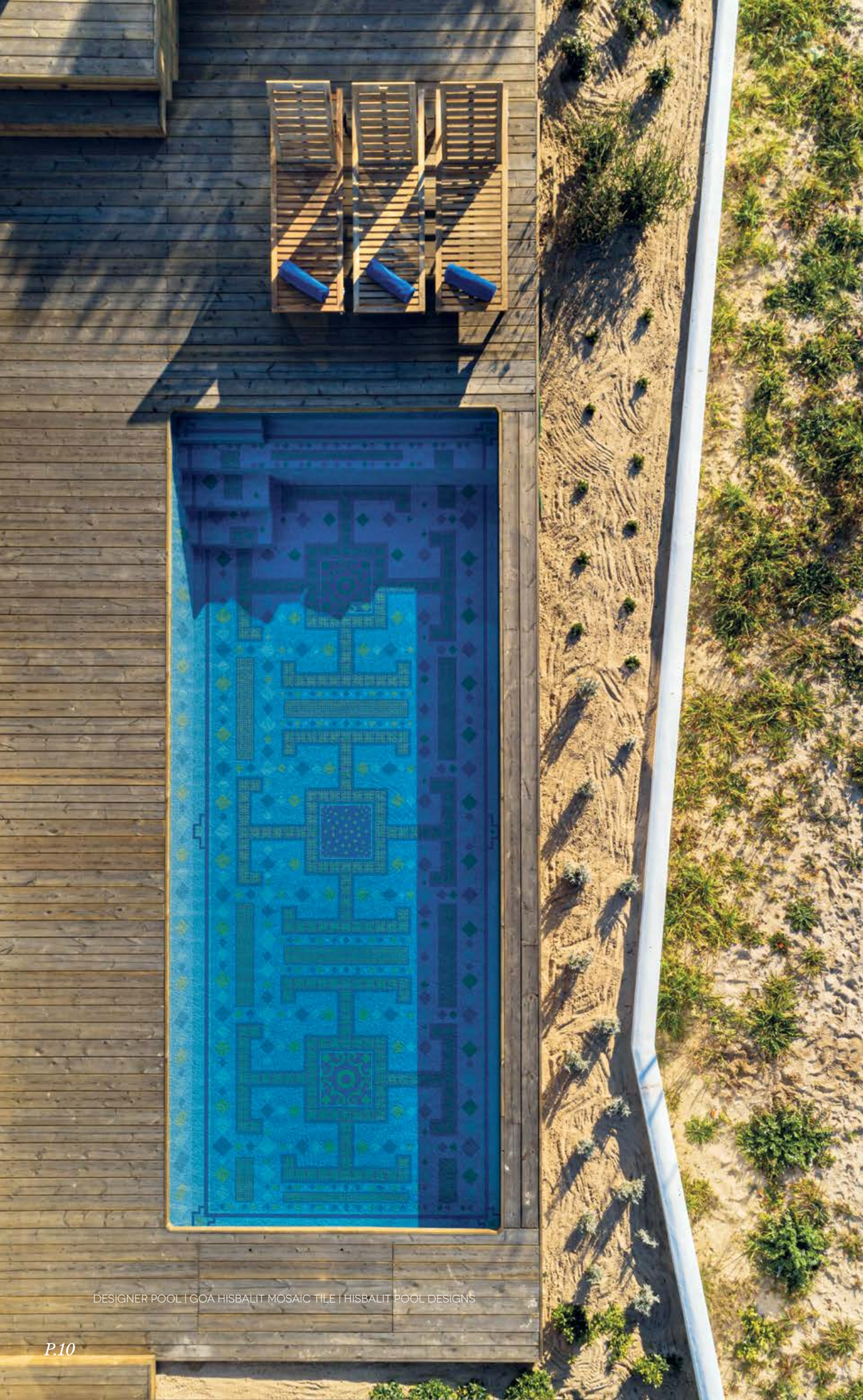
In the urban environment infinity pools are setting the trend. These pools are usually constructed on hotel rooftops with unique views of the city. One unique example is the Hotel Gold Los Arcos, high above Benidorm offering spectacular views of the sea.



INFINITY POOL AT HOTEL GOLD LOS ARCOS. PROJECT BY JAS ARQUITECTURA. PHOTO: ANDRÉS DÍAZ.

This project by Jas Arquitectura y Piscinas San José included the construction of two rooftop pools and a jacuzzi. For surfacing, the designers selected Hisbalit's Sicilia Aqualuxe mosaic tile in white for the pool basin and anti-slip tiles for the pool steps.

The design includes 3S Hisbalit tile for depth markings and the hotel logo created with the Identity Mosaic service.



DESIGNER POOL | GOA HISBALIT MOSAIC TILE | HISBALIT POOL DESIGNS

DESIGN!

*Distinction, aesthetics and creativity are increasing the hallmarks of any designer pool.
The latest in the creation of luxury pools is the use of customised, handcrafted designer materials and surfacing.*



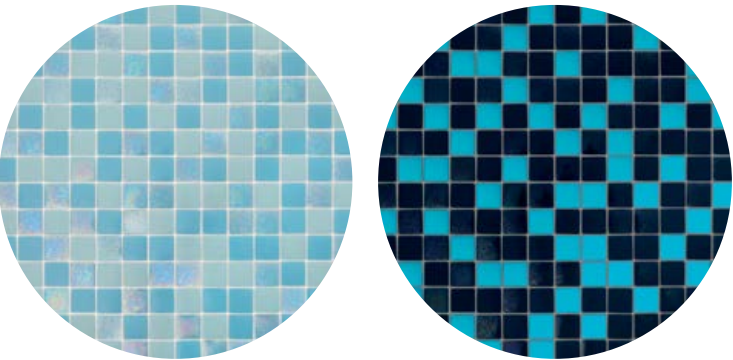
CUSTOMISED MIX OF HISBALIT MOSAIC TILES | HOTEL IBEROSTAR HOLGUIN



JAIPUR REFERENCE | HISBALIT POOL DESIGNS

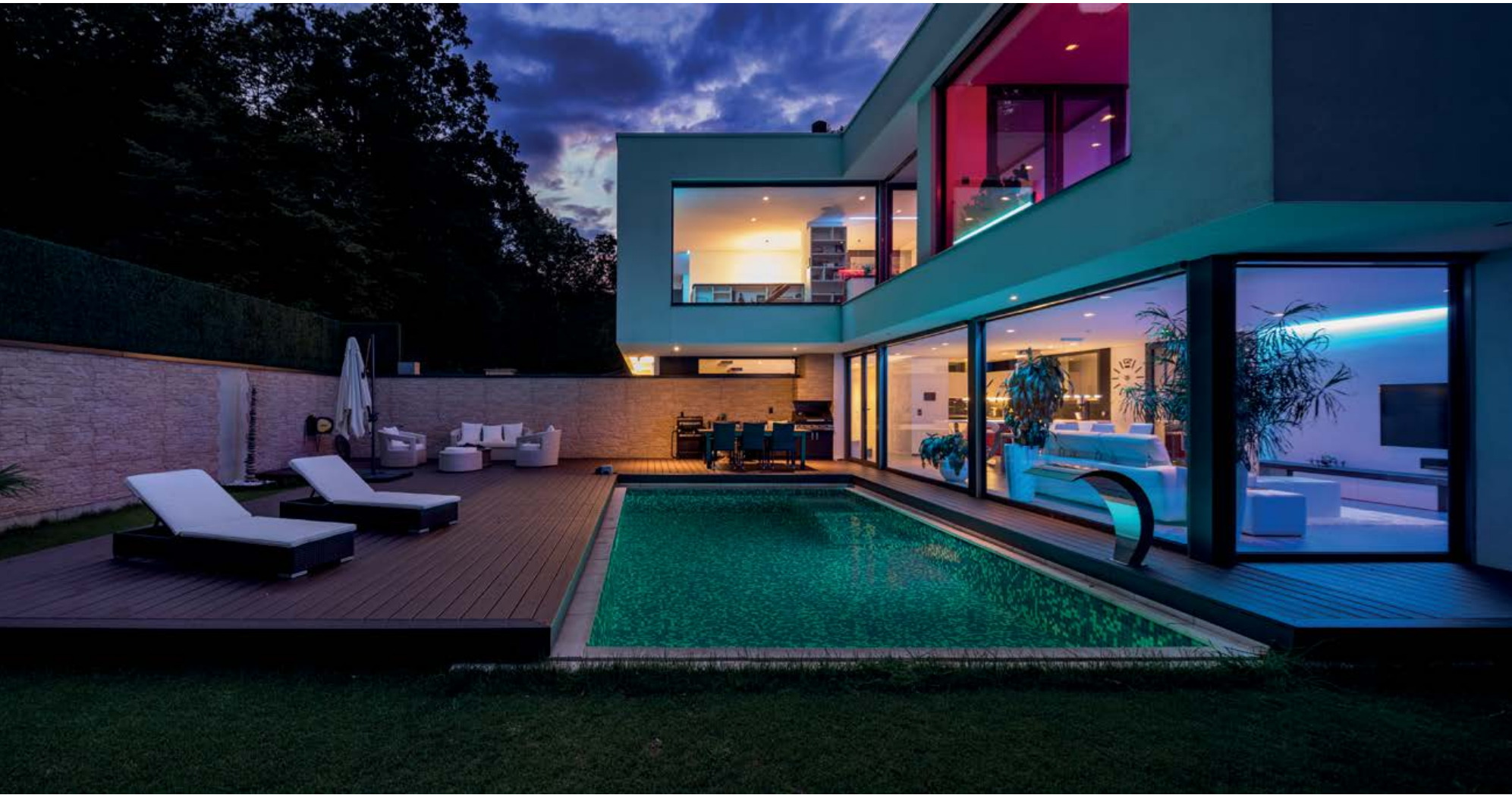
GLOW IN THE DARK!

Imagine a pool that changes colour at night, creating an entirely different atmosphere. The latest trend in designer pools is to use new materials that change colour with the light to create striking visual effects, such as Hisbalit's innovative Star Water collection.

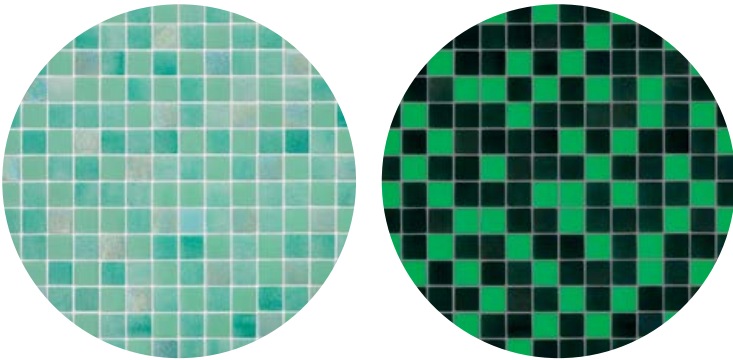


DRACO MOSAIC TILE: DAY/NIGHT

The new series from Hisbalit includes two models: Aquarius and Draco, in green and blue, respectively, available in square (2.3 x 2.3 cm) format with a gloss finish. These are two attractive mixes that incorporate photoluminescent mosaic tiles that absorb and store both natural and artificial light (fluorescent, ultraviolet or halogen). Once fully charged, the tiles release the absorbed energy gradually and continuously producing a green, blue or violet light depending on the model without the need for any external power source or batteries. The tiles charge fully after just a few minutes in the sunlight and the process continues indefinitely.



The striking new collection changes colour in the dark. Come nightfall the Aquarius model releases a green light and the Draco model a blue light.



MOSAICO AQUARIUS MOSAIC TILE: DAY/NIGHT

1 LETTERING

TYPOGRAPHY COLLECTION

One of the novelties Hisbalit is presenting in the coming months is the Lettering series, our first typography collection in mosaic tile. This carefully designed collection includes 4 letter styles and 16 different fonts, in square (2.3×2.3cm and 4×4 cm), round and hexagonal formats.



Each font has its complete range of upper and lower case letters and numbers.

Personalisation continues to be the trend and this product enables you to create unique phrases, names and messages that make the difference.

With Lettering we make it easy for both design studios and final clients to create letters and numbers with different styles and fonts to produce the best possible results with mosaic tile. With Hisbalit there is no limit to your creativity; thanks to our personalisation service it is possible to modify and customise the fonts to adapt them to every project.



UPPER CASE

A B C D E F G H I J K L M N
Ñ O P Q R S T U V W X Y Z

LOWER CASE

a b c d e f g h i j k l m n
ñ o p q r s t u v w x y z

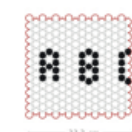
NUMBERS

0 1 2 3 4 5 6 7 8 9

FORMAT OPTIONS

- Hexagonal
- Redondo

SMALL SIZES



UPPER CASE

A B C D E F G H I J K L M N
Ñ O P Q R S T U V W X Y Z

LOWER CASE

a b c d e f g h i j k l m n
ñ o p q r s t u v w x y z

NUMBERS

0 1 2 3 4 5 6 7 8 9

FORMAT OPTIONS

- Hexagonal
- Redondo

SMALL SIZES



SEE THE COLLECTION!



HISBALIT AT CASA DECOR 2023

WE PARTICIPATED IN THE 58TH EDITION OF CASA DECOR, HELD FOR THE FIRST TIME IN THE ICONIC CALLE SERRANO, IN THE HEART OF MADRID'S GOLDEN MILE, FROM APRIL 13TH TO MAY 28TH.



This is an essential event for Hisbalit, where professionals from the world of interior design and architecture present the latest trends in the sector in spaces bursting with inspiration and creativity!

For 14 years, Hisbalit has participated in this celebrated event of the sector and this year we presented two new collections that visitors can experience in situ in two different exhibition spaces.

The latest trends in mosaic tile have been characterised by minimalist custom designs: unique, subtle and elegant motifs created by hand for floors, walls and all types of surfaces. The perfect touch of personal style.



UPPER WEST SALAMANCA

BATHCO SPACE | EGUE Y SETA | CASA DECOR 2023

The Bathco space, designed by Egue y Seta, was a bathroom that sets a new standard, transforming the space into a truly social setting. Practical, aesthetic, versatile and universal, with the colourful functionality and style of New York Tenement Houses.

The studio was inspired by the New York Tenement Act of 1900 that set minimum safety and hygiene standards for housing but also established a compositional harmony for residential buildings in New York neighbourhoods that were far from touristic at the time.



NACHO URIBESALAZAR | CASA DECOR 2023



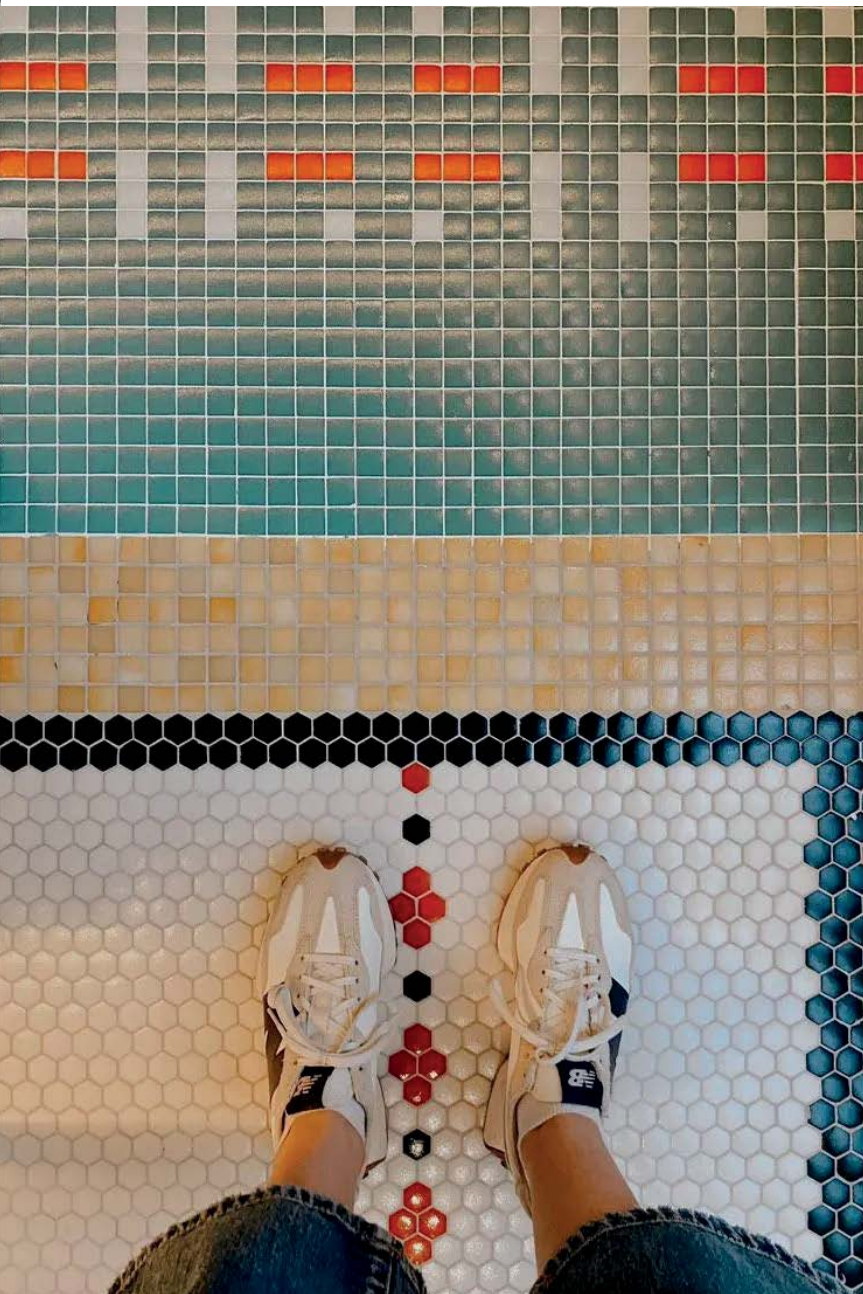
NACHO URIBESALAZAR | CASA DECOR 2023

In “Upper West Salamanca” there is “The Bathroom Act” requiring the bathroom to have the same level of stylish décor and design as the rest of the home. Here the designers recover the historic social and family character of the bathroom, with all the furnishings and functionalities necessary for a shared space while also “translating luxury” in all the bathroom features and able to fit any budget.

DESIGNER FLOORING

The most striking feature of the new social bathroom is the designer surfaces, custom created by Egue y Seta using two references from Hisbalit’s new PETITE collection, combining the Diamant and Point models.

Small, subtle and elegant motifs in hexagonal format on a light beige background (Unicolor 333) combining the two references with red and green as the protagonists. The designers chose red for the Diamant (Unicolor 172) and black for the Point (Unicolor 101), the same colour used to create the personalised bordering. To create this ‘custom’ mosaic tile carpet, d 29,160 tesserae were installed by hand at the Hisbalit factory in Cantabria.



@VANESAPRIETO



NACHO URIBESALAZAR | CASA DECOR 2023

A daring, retro aesthetic set the tone for the wet zones, incorporating the shower and bath. Egue y Seta selected the ANZA mosaic tile from the Palm Spring Hisbalit collection for the floor, lower walls and bath splashback, creating the look of a colourful planter. Mosaic tile with a mid-century aesthetic, in green and red, was combined with a yellow bordering using Hisbalit’s Niebla 152. The designers creatively used the same reference for the doorframe of the social bathroom, the bathtub step and also surfaced the floor in this yellow tile with two separate designs. The bathtub basin was surfaced in beige Unicolor 333 mosaic tile, the same colour used on the bathroom floor.

AR18, THE HOME OF THE FUTURE

RAVENTÓS ARQUITECTURA SPACE | CASA DECOR 2023

Andreína Raventós presented at Casa Decor 2023 a striking idea for a futuristic home in her AR18 space. An interstellar home that touches down and opens its doors to nature, inviting us to imagine our homes in the future given the incredible advances in technology.



In 18 square metres, the designer created a home with everything necessary for quality living. With two central modules, the space offers a complete, interstellar home.

Part of an ongoing reflection on forms of living in the future which began in the last edition of Casa Décor with the presentation of the ‘Modern Cave’: a similarly reduced space and a return to functional minimalism.



The AR18 is furnished in the most avant garde style, incorporating the latest technologies and eco-friendly materials, such as this sintered stone countertop, recycled textiles, and a floor of recycled glass mosaic tiles. A customised surface created with the Star reference from Hisbalit’s Texturas collection. A new concept that opens the door to décor and design, highlighting movement and sensation within a static space. Gloss and matte finishes, smooth and rough surfaces, metallic colours, iridescent and pearlescent surfaces combined with blocks of white that highlight the fundamental concept: a striking mix of textures.

THE NEW LETTERING HISBALIT COLLECTION

The Star floor includes messages. Andreína Raventós used the new Lettering collection from Hisbalit (typography in mosaic tile) to render the name of the AR18 home of the future in hexagonal tesserae in black with metallic touches (Urban Chic 723), including a sign for the WC in this interstellar home.

Original signs and messages are also incorporated into the floor, guiding visitors through the space, using the image of a hanger for the closet area.



CASA DÉCOR AWARDS 2ND SPECIAL JURY PRIZE “BEST DESIGN OF AN INTEGRATED PRODUCT”

We're still thrilled! The Awards ceremony at Casa Decor 2023 was full of surprises. We received the 2nd Special Jury Prize for “Best design of an integrated product” for the Bathco space “Upper West Salamanca” designed by Egue y Seta and the “AR18” space by Andreína Raventos. Thanks for making it possible!



Many thanks to the jury and to Casa Decor! Hisbalit is proud to receive the recognition of this leading event in interior design and décor in Spain, showcasing the latest trends and avant garde creativity.



Hisbalit's products are 100% Made in Spain, manufactured entirely in Cantabria using 100% recycled glass and all-natural pigments. The jury also valued the handcrafted nature of our mosaic tiles and the infinite possibilities for personalised designs. We will always remember this amazing edition of Casa Décor!

PHOTOS: CASA DECOR

PANICLUB

PROJECT BY BN ARQUITECTOS

A classic 'chiringuito' bar with a retro aesthetic that recalls the beach experience of the 1920's and 1950's.



PHOTOS: EDU LÓPEZ (ESTUDIO LUMINA)



YELLOW FLOOR (UNICOLOR 231) AND ARCH SURFACED IN BLUE MOSAIC TILE | UNICOLOR 240

Joy, colour and that relaxed, laidback feeling of endless summer, with the sound of the waves in the background. We present the Paniclub, a café-restaurant at the Playa de las Américas, in the south of Tenerife, designed by BN Arquitectos. An innovative space with the look and feel of a 'chiringuito' beach bar from the 1920's and 1950's.

A space with an original and tasteful modern aesthetic that transports clients to another era. Disconnect from the present and enjoy a welcoming and nostalgic atmosphere.



The façade of the café, slightly set back from the pavement, has the look of a theatre or movie scenario with touches of cinematic style. The fine and sophisticated carpentry work blurs the separation between indoors and outdoors, opening to create an inviting sensation of continuity.

THE COLOURS OF SUMMER

One of the most characteristic aspects of Panicclub is the surfaces, with mosaic tile being the star. BN Arquitectos chose Hisbalit tiles to surface the walls, booths, bar and cooler areas.



The colour palette is simple and attractive with brilliant primary colours creating a space filled with verve and vitality.

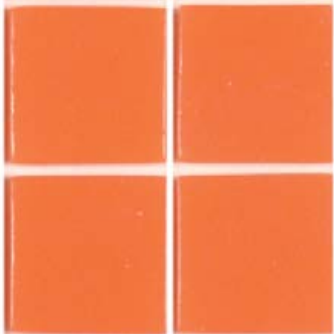
HISBALIT REFERENCES:



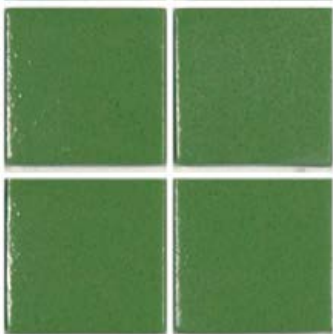
UNICOLOR 302



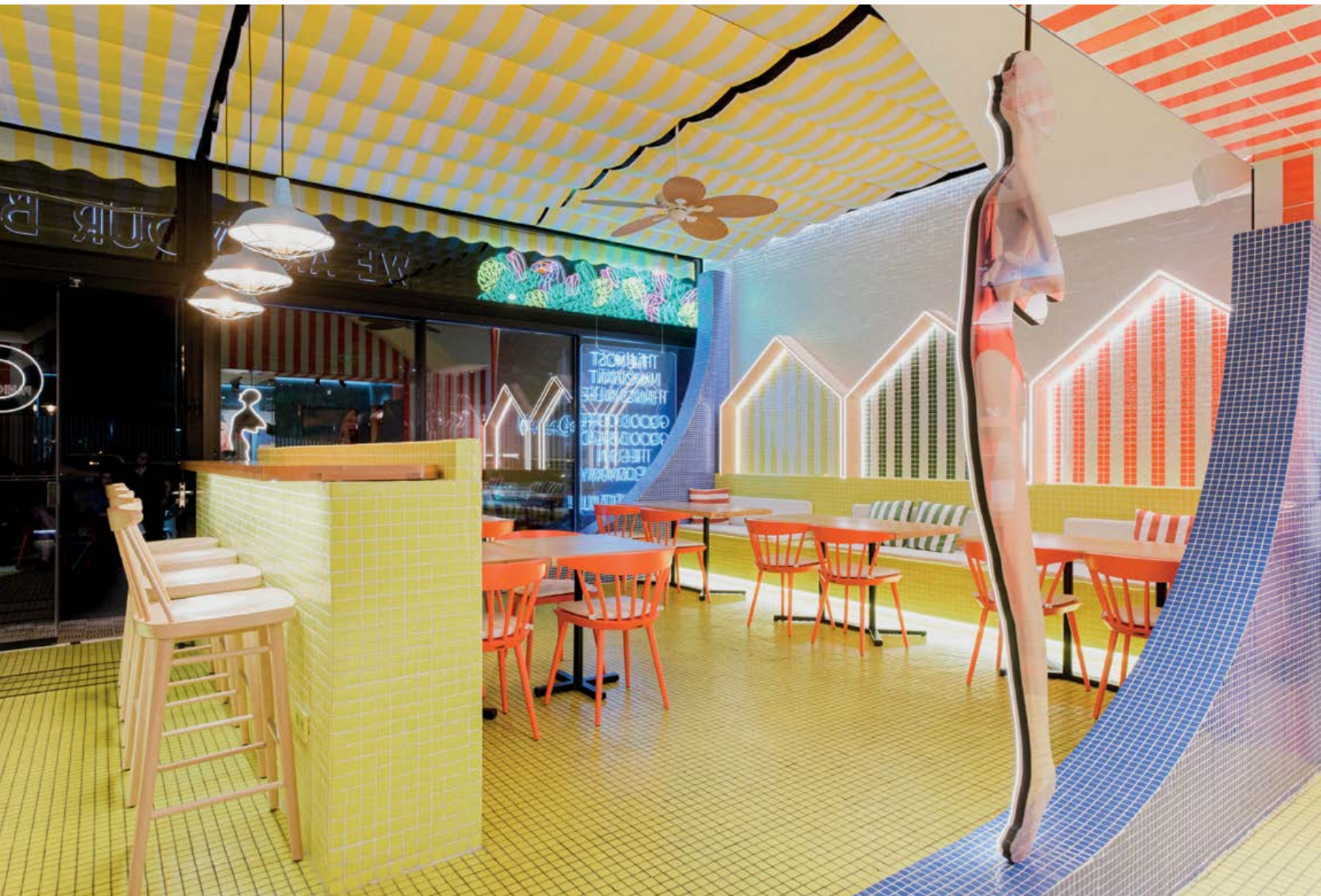
UNICOLOR 240



UNICOLOR 304



UNICOLOR 221



The lighting was a fundamental part of the project, essential to giving the right image both by day and by night. During the daytime the lighting accentuates the vibrant colours while at night the neon signs and direct lighting evoke the cool aesthetic of hotels on Ocean Drive in Miami or Atlantic City.

RETRO AESTHETIC

The retro aesthetic is reinforced by the use of mosaic tile and images of models in bathing suits by famous photographers such as Elena Iv-Skaya and Eszter Sara Cseh. All the furnishings were also custom designed to create a special nostalgic vibe recalling endless and easy summers at the beach bar.



The retro aesthetic is combined with all the functionality necessary to enjoy a meal or a cocktail. Paniclub is much more than a café-restaurant, it is a meeting point, a place of fun and comfort where you can enjoy a simple, delicious meal with that special holiday flavour.



INTERVIEW

JOSÉ LARA



*“IN THE COMING MONTHS
WE’LL SEE MORE COLOURFUL SPACES
WITH TERRACOTTA OR EARTHY BROWNS
AND MORE CONTRAST
WITH ELECTRIC COLOURS”*

Order and attention to detail are the maxims of the studio founded in 2018, specialised in a public looking for premium spaces where sustainable materials and artisanship are essentials.

We invite you to discover the origins of the interior designer José Lara, his most important projects, the materials he considers essential and his handcrafted pieces as jewels of design.

QUALITY, ELEGANCE, ORDER AND A DASH OF THE RISQUÉ... THE WORK OF JOSÉ LARA INTERIORISMO INCORPORATES SOPHISTICATION, DESIGN AND A PAINSTAKING ATTENTION TO DETAIL. IN YOUR OWN WORDS, WHAT ARE THE HALLMARKS OF YOUR IDENTITY?

The basis of all our projects has always been empathy. Either for a home or a business, it's important to know the client and understand their essence. That's why our projects are very different from one another. Based on that, we are also continuously looking for top quality sustainable materials and solutions. Order and attention to detail are the watchwords of the studio.



PRIVATE HOME IN LA MORALEJA, MADRID. PHOTO: JAIME FERRERLO WITH CRISTINA RODRÍGUEZ GOITIA

IN 2018 YOU LAUNCHED YOUR OWN STUDIO AFTER MORE THAN 15 YEARS AS A PROFESSIONAL IN THE SECTOR. DID YOU ALWAYS KNOW YOU WANTED TO DEDICATE YOURSELF TO DESIGN?

I was born into a family dedicated to design and textiles. And so, I always had a passion for textiles, surfaces and the concept of aesthetic beauty. But I originally began studying Biology. Nature has always been and still is my main passion in life and I think that's something that comes out in my designs in some way.

There came a moment when my family needed me to help with the company and I discovered that interior design was what I really wanted to dedicate myself to professionally. And so, I trained in interior design. Today I combine my two passions: professionally, I design interiors and, whenever I can, I enjoy nature with my little ones.

RESTAURANTS, HOTELS, DENTAL CLINICS, HOMES, PRESTIGIOUS EVENTS IN THE SECTOR; WHAT PROJECT DO YOU REMEMBER WITH PARTICULAR FONDNESS?

I always say that the most important project is the one we're working on now. At the moment, a beautiful rural hotel, loaded with feeling and family history of the owners. We are also working on the renovation of a 18th century farmhouse that will be a weekend getaway place for some very special clients. And, we are also fortunate to be working on a number of residential projects and in contact with an amazing group of people who help us to learn and enjoy the process every day.



BATHROOM WITH DOTS FLOORING (LES CLASSIQUES HISBALIT). PHOTO: LUPE CLEMENTE

IS THERE ANY MATERIAL THAT IS ALWAYS A PART OF YOUR PROJECTS?

Each project is very different because the design begins with the client at the centre and so we can't really generalise. But sustainable materials are always a part of the project, applied in different ways in each and every one. In this aspect mosaic tile allows us to create totally personalised applications that are different for each project but always based on a high-quality, recycled and sustainable material.



SPEAKING OF COLOURS, THE COMBINATION OF BLACK AND WHITE IS A COMMON FEATURE OF YOUR WORK. WHY? IS IT DARING ON WALLS AND FLOORS?

Black and white are total opposites. The contrast is also paradoxically balanced, elegant and subtle. We often use this combination in our work, almost unintentionally. Daring? Maybe that's why we love it so much!

WHAT DO YOU SEE AS THE NEWEST COLOUR TRENDS IN DÉCOR IN THE COMING MONTHS?

For me, apart from other indicators, Milan Design Week usually sets the trends in interior design for the coming years. In the last edition, I saw various trends. In all of them, there is a clear inclination towards more colourful spaces than we've seen in the last few years. Of course, there's a continuity of a trend towards a greater connection between human beings and the natural world. And so, I foresee that in the coming months we'll have lots of warmer colours, terracotta, browns, earthy reds, but also with a trend towards more contrast in spaces with electric colours, very separate on the colour wheel: greens, blues, yellows or very bright reds.

A SERENE LUXURY IS REVOLUTIONISING INTERIOR DESIGN. MINIMALISM WITH LUXURIOUS DETAILS AND HANDCRAFTED PIECES. DO YOU IDENTIFY WITH THAT STYLE?

There's no doubt our work is focussed on a public looking for premium quality and luxury. At our studio we try to offer these nuances in terms of quality materials, exclusive design, good insulation to ensure optimum energy efficiency, finishes or textures, but shunning any pretention or ostentation. On that point, artisanship is clearly a determining factor. My clients value not only the beauty of objects or materials but also their traceability and the way they are produced.

In our mechanised era, we of course look to technology to provide comfort to human beings, but we also believe in the value of manual labour. In my case, when I am in front of an object that transmits this labour and artisanship, I feel an inner calm, a kind of connection to my own essence.



MARBELLA LUXURY SUITE, NEOLITH BY JOSÉ LARA IN MARBELLA DESIGN 2022. DESIGNER FLOOR FROM ART FACTORY HISBALIT FRAISE + VANILLE + UNICOLOR 101.



ONE OF THE CHARACTERISTICS OF THE ART FACTORY HISBALIT PERSONALISATION SERVICE IS THAT IT'S ALL DONE MANUALLY, AND THIS IS PRECISELY ONE OF THE HALLMARKS OF SOME OF YOUR PROJECTS, THESE ARE YOUR HANDCRAFTED PIECES, CREATED BY YOU AS JEWELS OF DESIGN. DID GROWING UP IN A FAMILY DEDICATED TO TEXTILES AND UPHOLSTERING INFLUENCE YOUR PASSION FOR CREATIVITY AND CRAFTSMANSHIP

It is precisely these roots that I believe give me a sense of inner peace when I am surrounded by works of art or handcrafted pieces, just the kind of possibilities offered by Art Factory. Also, being lucky enough to actually see how our designs are produced at Hisbalit, we can transmit to our clients that the designs created for them have been crafted entirely by hand, piece by piece. It's really amazing.

HOW IMPORTANT IS IT TO YOU BEING ABLE TO CREATE TOTALLY "CUSTOMISED" SURFACES?

It's a real luxury. The creative possibilities it offers are limitless. One thing about the way we work in the studio, when we have to design a piece, it's like a festival of design. Every member of the team creates their own proposal and between all of us we decide which fits best with the project. It's a lot of fun and, also, the client gets a product which is totally personalised.

WHEN CHOOSING MATERIALS, IS IT IMPORTANT THAT THEY BE LOCAL AND ECOLOGICAL?

I believe that today, for an interior design studio, taking responsibility for sustainability each step of the way is simply the only option.

I love that point: "local and ecological". I remember for my space at Casa Décor 2020, the "21st Century Marquess", I presented the project as a study in 'Km 0' interior design. Using local products. I realised that the carbon footprint can be greatly reduced in terms of transport and packaging by choosing locally produced materials. That's why, for us, our first choice is always Made in Spain, ahead of any other alternatives.



SHELVES SURFACED IN HISBALIT MOSAIC TILE. '21ST CENTURY MARQUESS'. PHOTO: LUIS HEVIA. CASA DECOR 2020

YOU KNOW OUR MOSAIC TILE AND YOU HAVE USED IT OFTEN IN YOUR MOST IMPORTANT PROJECTS WHY HISBALIT?

Because you guys are great! ... (hahaha) No. Seriously. I fell in love with the brand when I visited the factory in 2019. The ingredients of the product. A powder of recycled glass I could touch with my own hands. What could be more sustainable?

Secondly, Hisbalit has known how to adapt to the highly demanding and everchanging world of construction and interior design. The Art Factory personalisation service offers a world of possibilities.

But there's more. You don't stop. Understanding the needs of the market, you're surprised me again with the launch of your new Petite collection, a new direction.

And, of course, what is fundamental for me are the people behind the company. In the end, behind everything there are people and you guys are great.



WE LOVE THE CREATIVE APPLICATIONS YOU'VE MADE OF OUR MATERIAL. YOU USED IT TO SURFACE COLUMNS, SHELVES AND EVEN A FIREPLACE. HAS THE SIZE OF THE TILES, ONLY 4MM THICK, HELPED YOU TO ADAPT IT TO ANY SURFACE?

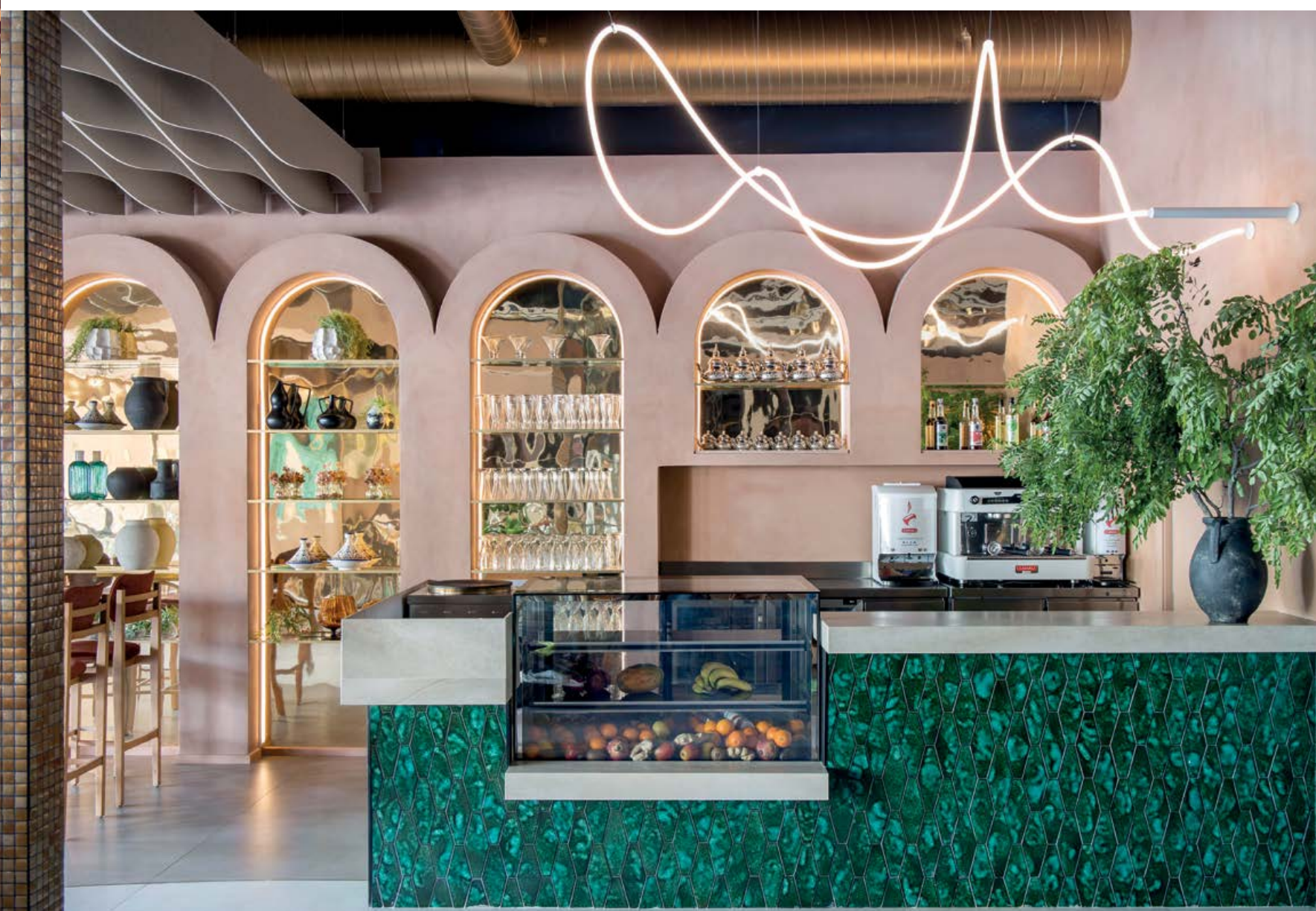
It's funny because every time in the studio we have to find a solution for a curved surface that also requires a certain durability, I automatically propose Hisbalit. My experience has been fantastic because whenever we have a project on hand, I can count on your technical team to guarantee optimum results.

We've used the material on floors, walls, furniture, columns, curved walls, ceilings, bathrooms, facades, even pools!

COLUMNS SURFACED IN YESO MOSAIC TILE (RAW HISBALIT).
«FORMS OF FIRE». FERROMAGNO BY JOSÉ LARA.
MARBELLA DESIGN 2021.
PHOTOS: PALOMA PACHECO TURNES

FOR THE ARGANA RESTAURANT YOU CHOSE AURUM MOSAIC TILE TO SURFACE THE COLUMNS. WHY DID YOU CHOOSE THE NEW ELEMENTS COLLECTION INSPIRED IN THE POWER OF METALS?

The concept for Argana was very specific. I wanted to transmit the idea of Argan oil as liquid gold. Also, the columns area and risers called for a highly durable material. And, finally, the contrast of the glossy finish gave a touch of sophistication, a jewel-like surface.



ARGANA RESTAURANT WITH COLUMNS SURFACED IN AURUM MOSAIC TILE (ELEMENTS HISBALIT). PHOTOS: PALOMA PACHECO TURNES

WHAT'S NEW?



PRESENTATION NEW COLLECTIONS

On Thursday the 18th of May, we presented "The latest trends in eco-friendly mosaic tile for 2023/24" to the media of the sector and renowned Spanish design and architecture studios.



SEE MORE!



AWARDS «BUILDING OF THE YEAR» ARCHDAILY 2023

7 projects with Hisbalit mosaic tiles nominated in the Archdaily 2023 "Building of the Year Awards" in the "Best Applied Products" category.



SEE MORE!



40TH ANNIVERSARY OF CERSAIE

Hisbalit will participate in Cersaie 2023, a very special edition celebrating the 40th anniversary of this prestigious international event. September 25th to 29th in Bologna, Italy.

I LOVE IT!

A LOOK AT THE MOST POPULAR HISBALIT PROJECTS
ON SOCIAL MEDIA!



Casa Gialla | Project by Gon Architects
Mosaico Unicolor 231



Designer floor from Art Factory Hisbalit
Project by Isalo Estudio



Designer floor from Art Factory Hisbalit
La Villa Medusa Restaurant, Dubai



Designer floor from Art Factory Hisbalit
Melía Paradisus Los Cayos | JMQ Interiors



Miriam Alía Home
Unicolor 103 in 4x4 format



Icon Boutique Santander | Project by Aedificare
Mosaico BIJOU

WHAT TO FIND OUT MORE? FOLLOW US ON INSTAGRAM: @HISBALIT?
WE NOW HAVE PROFILE ON TIK TOK @HISBALIT!





MODEH

www.hisbalit.es / comercial@hisbalit.es